



About SI

Supplemental Instruction (SI) is a nationally recognized academic support program offering free, out-of-class study sessions for traditionally difficult courses. Sessions are led by students who have successfully completed the course during a previous semester. During the sessions, students compare notes, organize their information, and predict test questions. Studies show students who regularly attend SI earn up to one full letter grade higher than the students who don't attend.



The SI Sessions

Sessions begin the first or second week of class and run until the end of the semester. Two to three sessions are held each week with extra sessions held at test time.

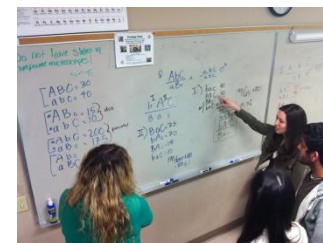
Attend once, or attend every session. The choice is up to you, but our data suggest that the more you attend, the higher your final grade will be in the course!

The SI Leaders

All SI leaders are students, trained and supervised by the SI coordinator in the Office for Research, Training, and Education (OTRES). The SI leaders facilitate and encourage group learning of course material, and help you get the most out of your study time.

SI leaders know the subjects because they:

- Have taken the course before and were successful
- Attend class with you
- Read all assigned materials
- Communicate regularly with professors
- Develop study sheets



Courses Currently Supported by SI

Biology 210
Biology 215
Biology 351
Biology 352

Chemistry 201
Chemistry 202

Math 160

Physics 202
Physics 205 and 206

Psychology 360

Want more information?

<http://www.csusm.edu/si/>