

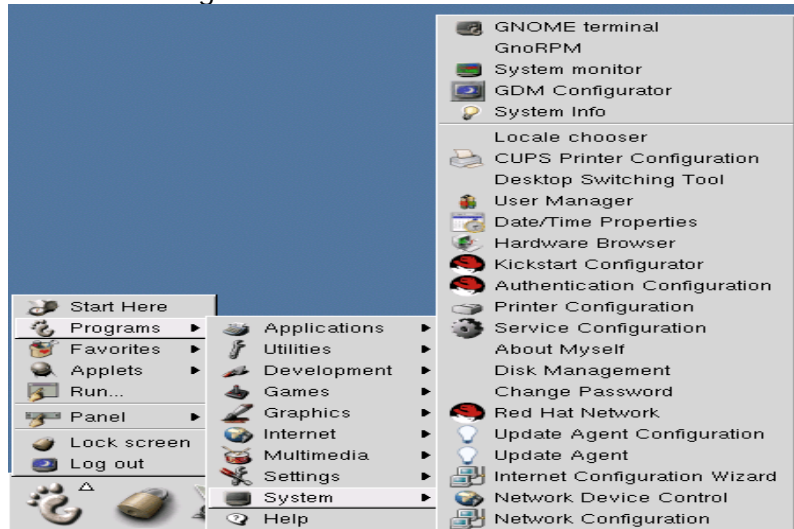
Linux

Setting up a DHCP (Dynamic Host Configuration Protocol) Connection using RedHat Linux 7.3

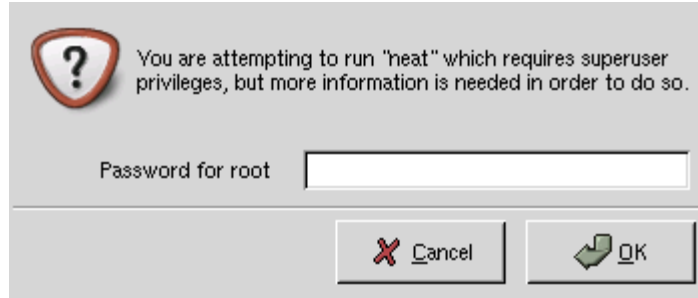
Warning: If you are currently using a laptop to connect to a LAN (Local Area Network), the following Internet access port configuration settings may replace all, or part of, any existing network configuration you have on your laptop. Be sure to copy down your current network configuration settings and addresses before you re-configure your laptop for use on the UBC Internet Access Ports.

Step 1: Setting up the Connection

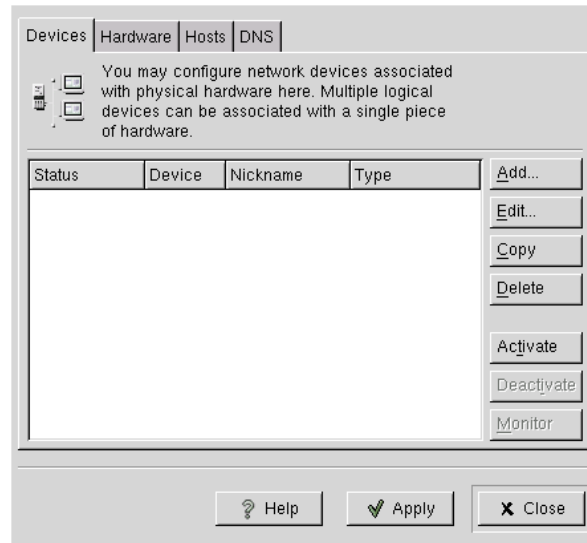
1. Start the Network Configuration utility.
 - o If you're using the GNOME Desktop Environment, select:
 - Main Menu
 - Programs
 - System
 - Network Configuration



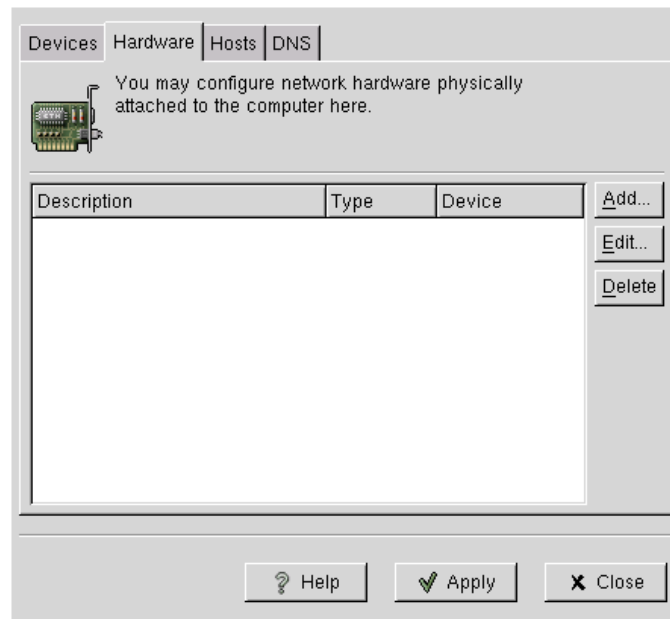
- o If you're using the K Desktop Environment, select:
 - Main Menu
 - System
 - Network Configuration
2. If a window appears asking for the root user's password, type it in then press **<Enter>**.



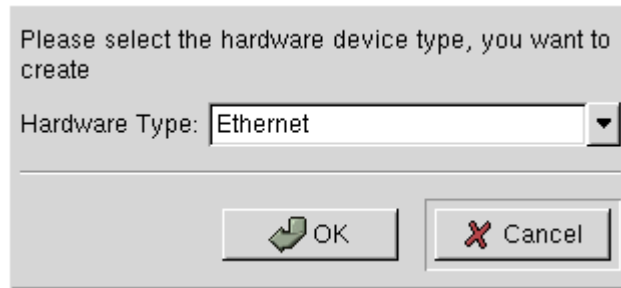
3. You should now see the Network Configuration window:



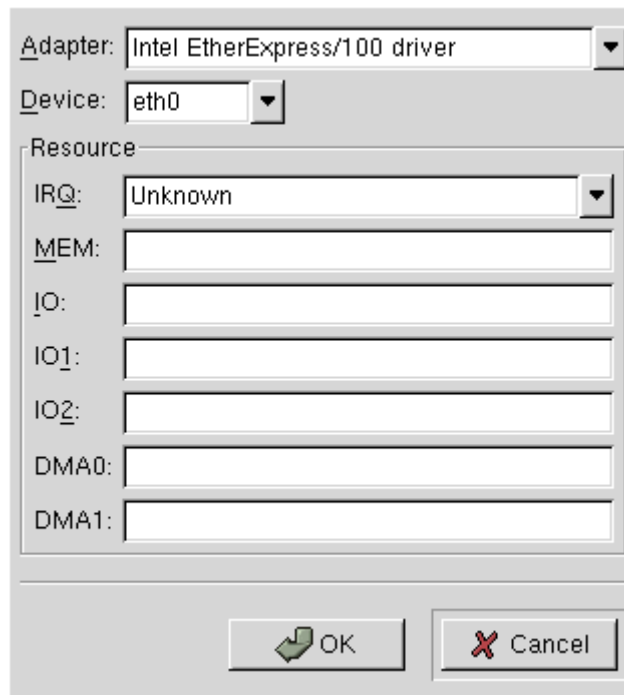
4. Select the **Hardware** tab.



5. If your network card does not appear in the window:
 1. Click on the **Add...** button.
 2. Choose **Ethernet** from the drop-down menu, then click **Next**.



3. Choose your Ethernet card's model name from the drop-down menu.

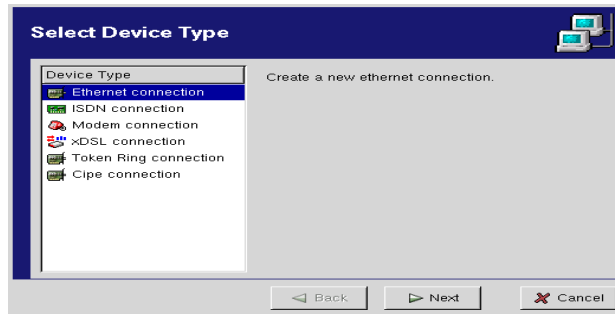


4. Click the **OK** button.

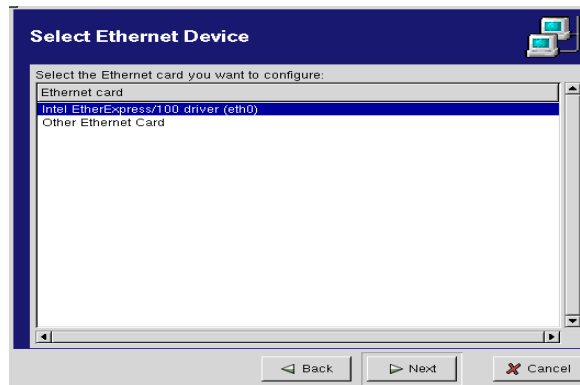
6. Click the **Devices** tab.



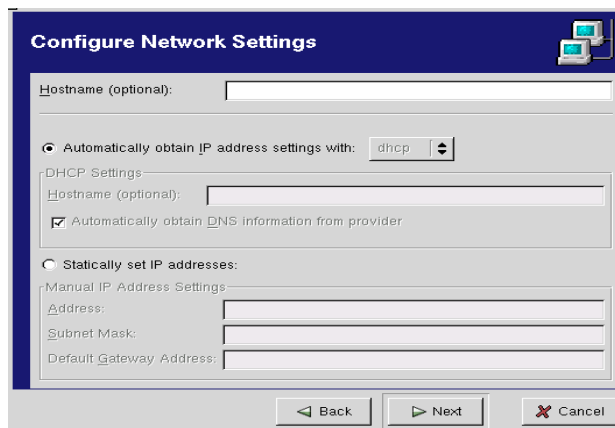
7. Click the **Add...** button.
8. Select **Ethernet connection** then click **Next**.



9. Select your Ethernet card, then click **Next**.



10. Click **Next** to accept the default settings.



11. Click **Finish** to accept the information and close this window.
12. Click **Apply** to save your changes.
13. Click **Activate** to connect to the network, then **Close** to close the Network Configuration utility.

Get the DHCP Client

If you need the DHCP client daemon for Linux so that the CSUSM DHCP server can issue your machine an IP address. You can download this from any of the following ftp sites:

<ftp://ftp.cdrom.com/pub/linux/sunsite/system/network/daemons>

<ftp://sunsite.unc.edu/pub/Linux/system/network/daemons>

<ftp://ftp.cc.gatech.edu/Linux/system/network/daemons>

Once your network card and settings are correctly configured, follow the steps on the page entitled ***Authenticating on the Cal State San Marcos Campus Network*** to begin using your network connection from campus.