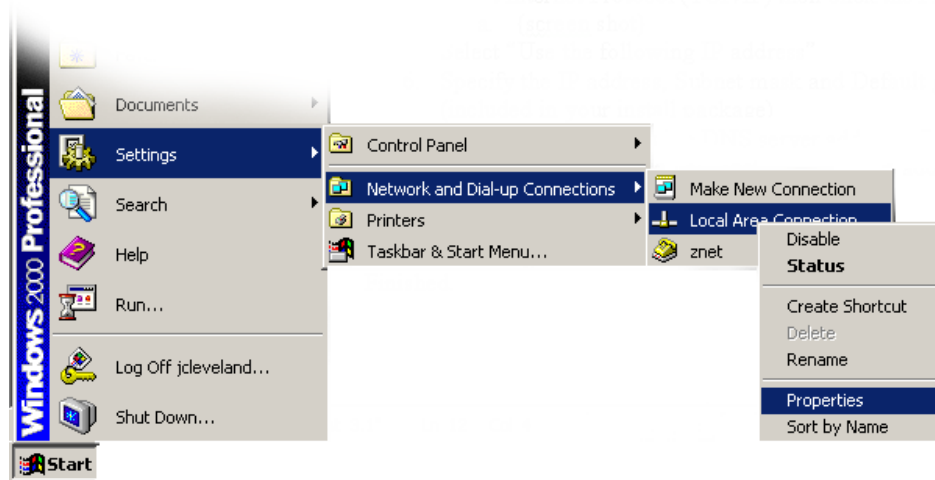
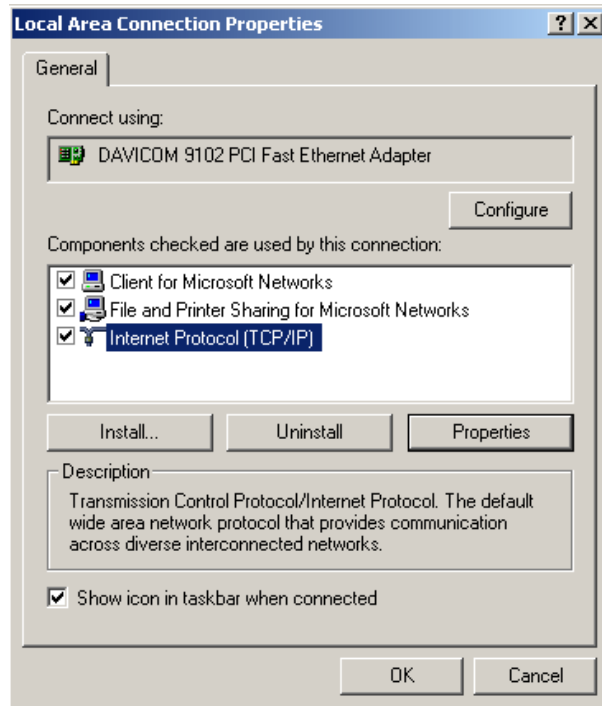


Windows 2000 Network Configuration

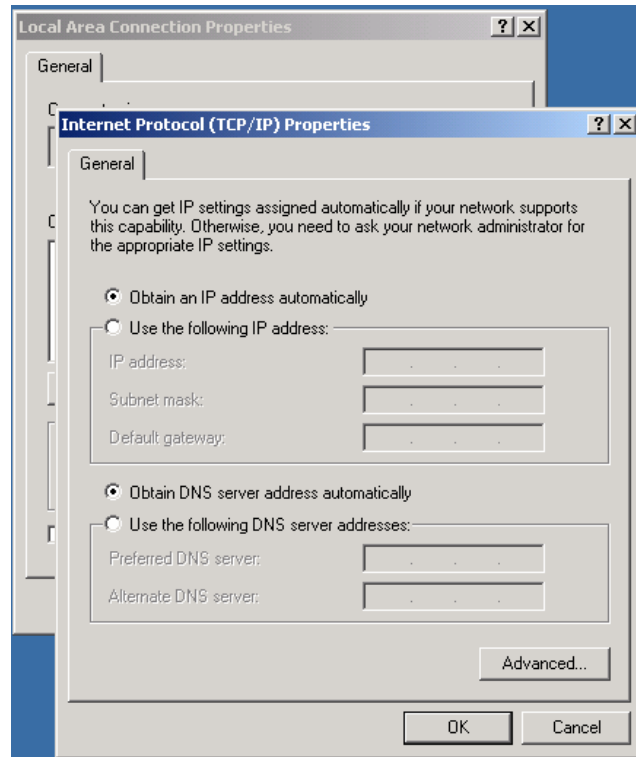
1. Ensure you have an Ethernet Network Interface Card (NIC) installed and correctly configured in your computer.
2. Plug one end of a CAT-5 or CAT-6 cable into your computer's NIC and the other end into the LAN interface on the wall.
3. Open the property settings for your computer's LAN interface by following these steps:
 - a. Click **Start – Settings – Network and Dialup Connections** and right click the **Local Area Connection** for the interface you connected to your computer. Select **Properties**.



4. Select **Internet Protocol (TCP/IP)** then click the **Properties** button.



5. Here, make sure the “**Obtain an IP address automatically**” radio button is selected.



6. Click **OK** until you are back at the desktop.
7. **Reboot** your computer.

Once your network card and settings are correctly configured, follow the steps on the page entitled ***Authenticating on the Cal State San Marcos Campus Network*** to begin using your network connection from campus.