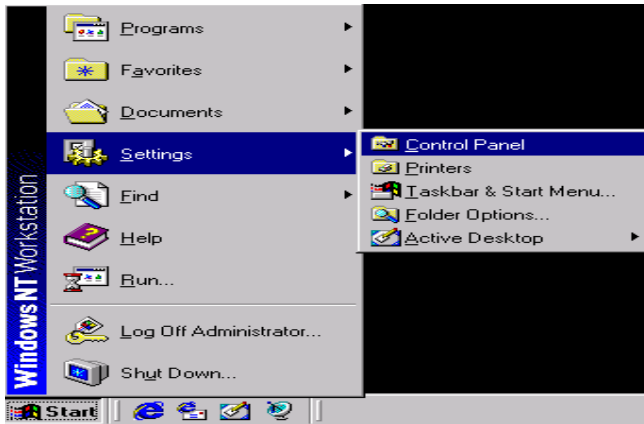
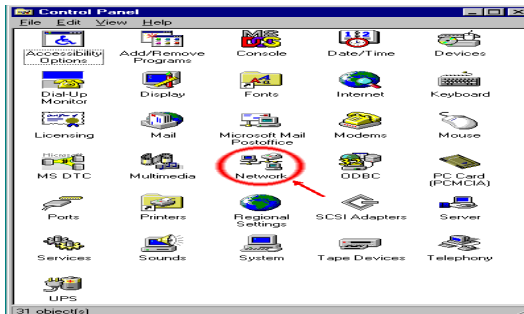


Windows NT 4.0 Network Configuration

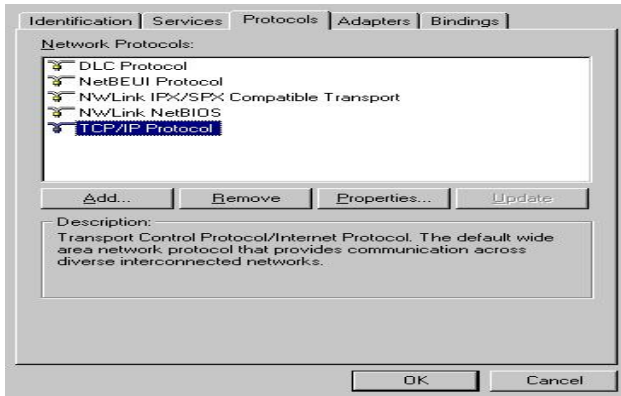
1. Ensure you have an Ethernet Network Interface Card (NIC) installed and correctly configured in your computer.
2. Plug one end of a CAT-5 or CAT-6 cable into your computer's NIC and the other end into the LAN interface on the wall.
3. To begin, go to the START menu and select Settings, then click on Control Panel.



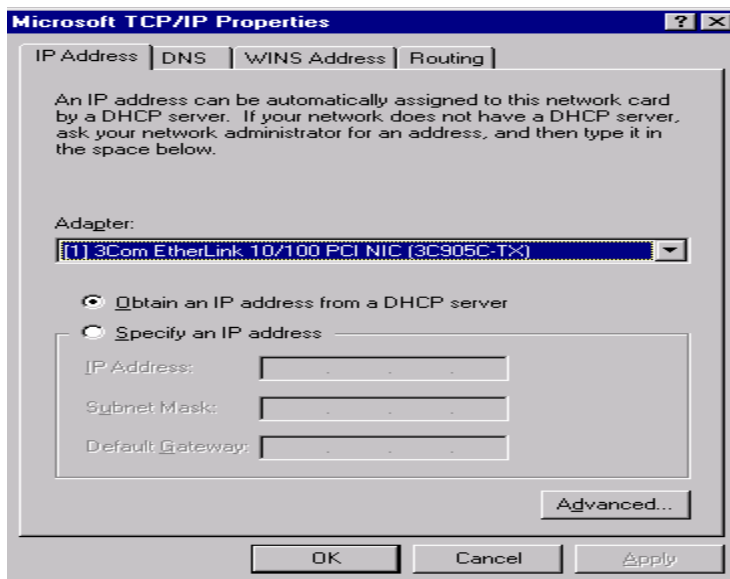
4. Double click on **the Network Icon**. It will take you to Network Configuration box.



5. Then click on the **Protocol** tab. Then Highlight the "**TCP/IP Protocol**" line and click **Properties**.



6. Make sure the “Obtain an IP address from a DHCP server” radio button is selected. Then click OK.



7. The other tabs should be left at their defaults.
8. Reboot your computer.

Once your network card and settings are correctly configured, follow the steps on the page entitled ***Authenticating on the Cal State San Marcos Campus Network*** to begin using your network connection from campus.