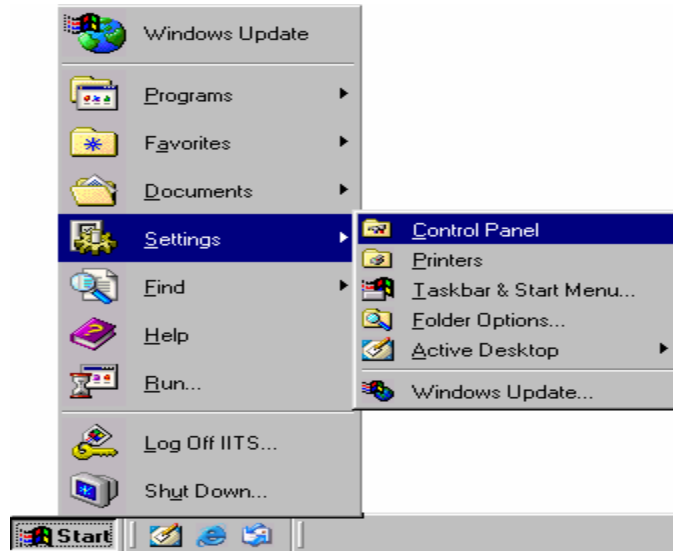
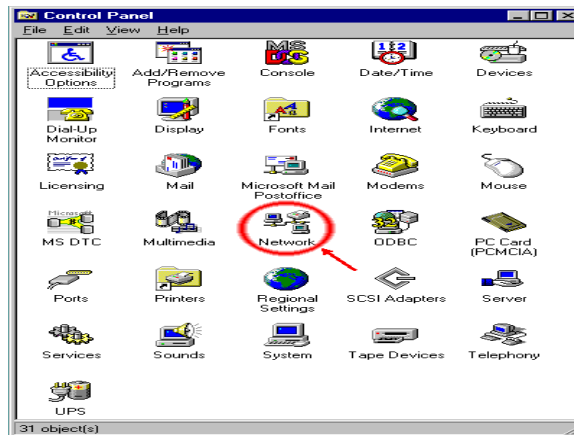


Windows 95/98/ME Network Configuration

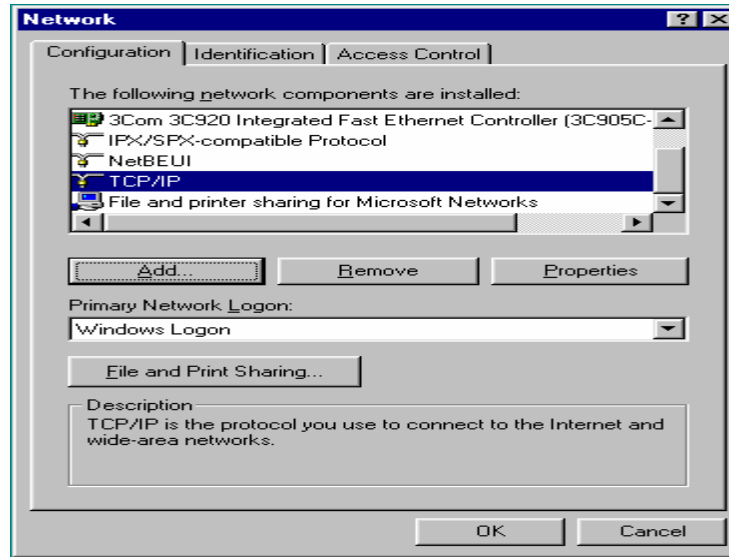
1. Ensure you have an Ethernet Network Interface Card (NIC) installed and correctly configured in your computer.
2. Plug one end of a CAT-5 or CAT-6 cable into your computer's NIC and the other end into the LAN interface on the wall.
3. Open the property settings for your computer's LAN interface by following these steps:
 - a. Click **Start – Settings – Control Panel**.



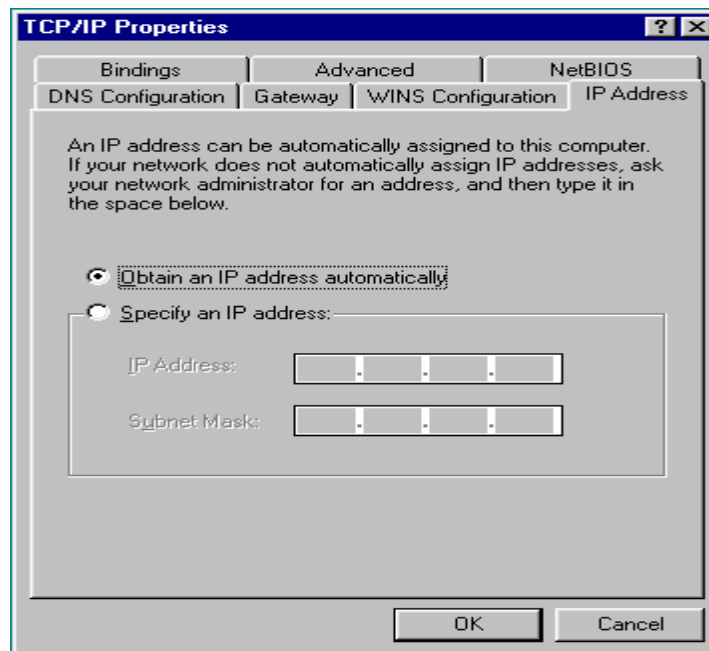
4. Next, double-click the **Network** Icon



5. Select **Internet Protocol (TCP/IP)** then click the **Properties** button.



6. Here, make sure the **"Obtain an IP address automatically"** radio button is selected.



7. The other tabs should be left at their defaults.
8. Click **OK** until you are back to the desktop.
9. Reboot your computer.

Once your network card and settings are correctly configured, follow the steps on the page entitled ***Authenticating on the Cal State San Marcos Campus Network*** to begin using your network connection from campus.