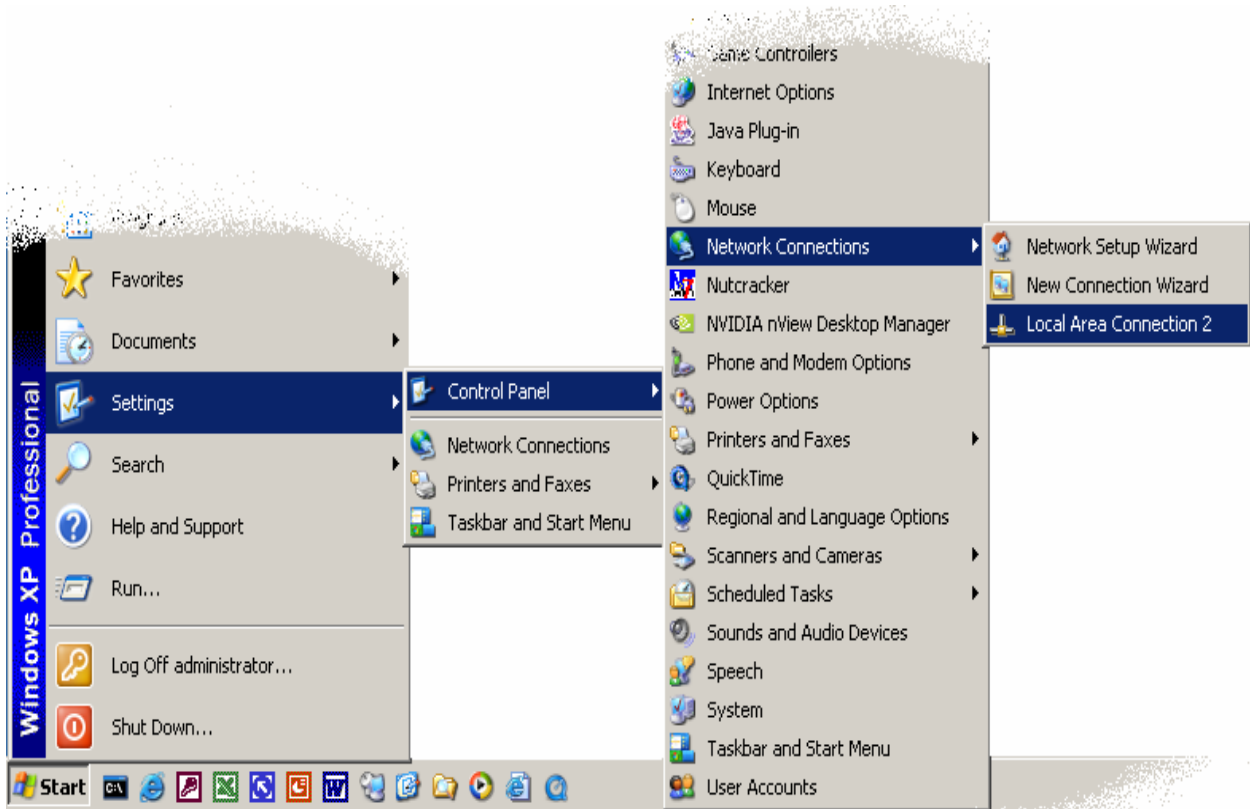
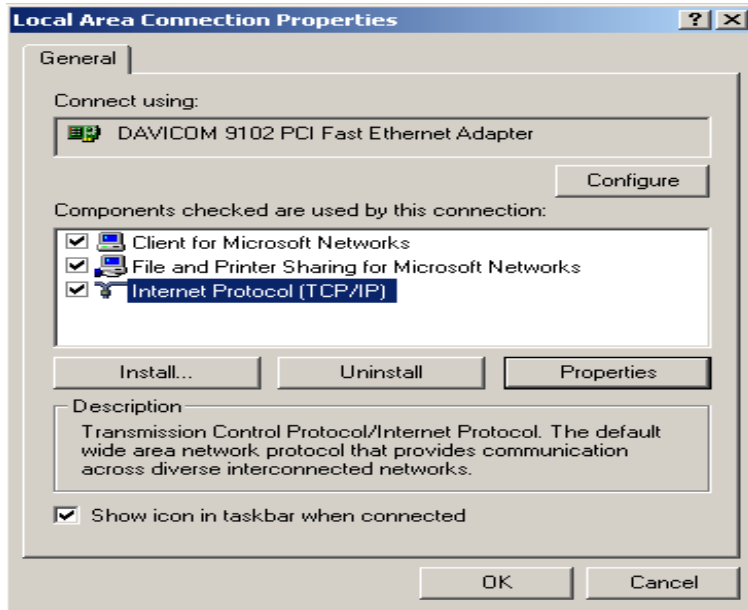


Windows XP Network Configuration

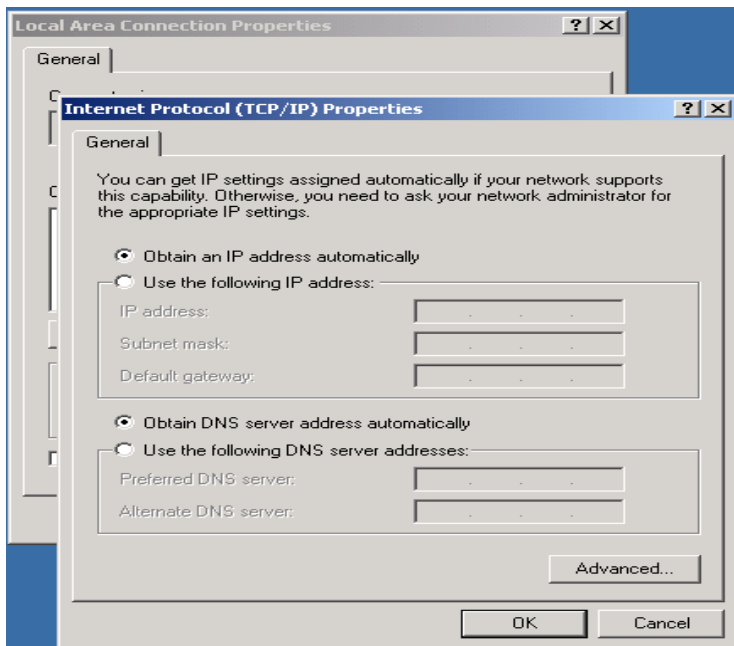
1. Ensure you have an Ethernet Network Interface Card (**NIC**) installed and correctly configured in your computer.
2. Plug one end of a CAT-5 or CAT-6 cable into your computer's **NIC** and the other end into the **LAN**(Local Area Network) interface on the wall.
3. Open the property settings for your computer's LAN interface by doing the following:
 - a. Click **Start – Settings – Control Panel – Network Connections** and right click the **Local Area Connection**. Select **Properties**.



4. Select **Internet Protocol (TCP/IP)** then click the **Properties** button.



5. Here, make sure the **“Obtain an IP address automatically”** radio button is selected.



6. Click **OK** until you are back at the desktop.
7. Reboot your computer.

Once your network card and settings are correctly configured, follow the steps on the page entitled *Authenticating on the Cal State San Marcos Campus Network* to begin using your network connection from campus.