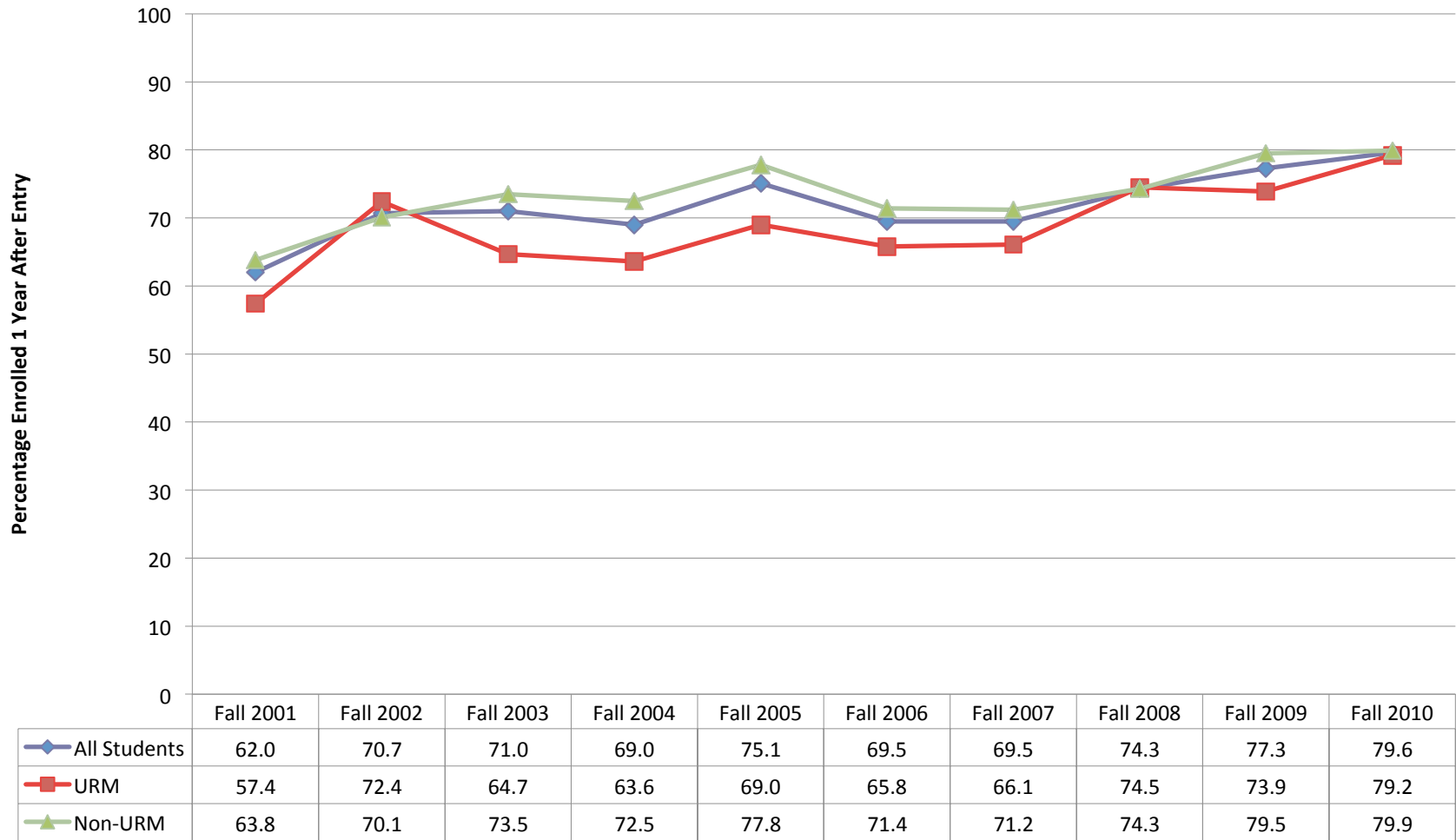


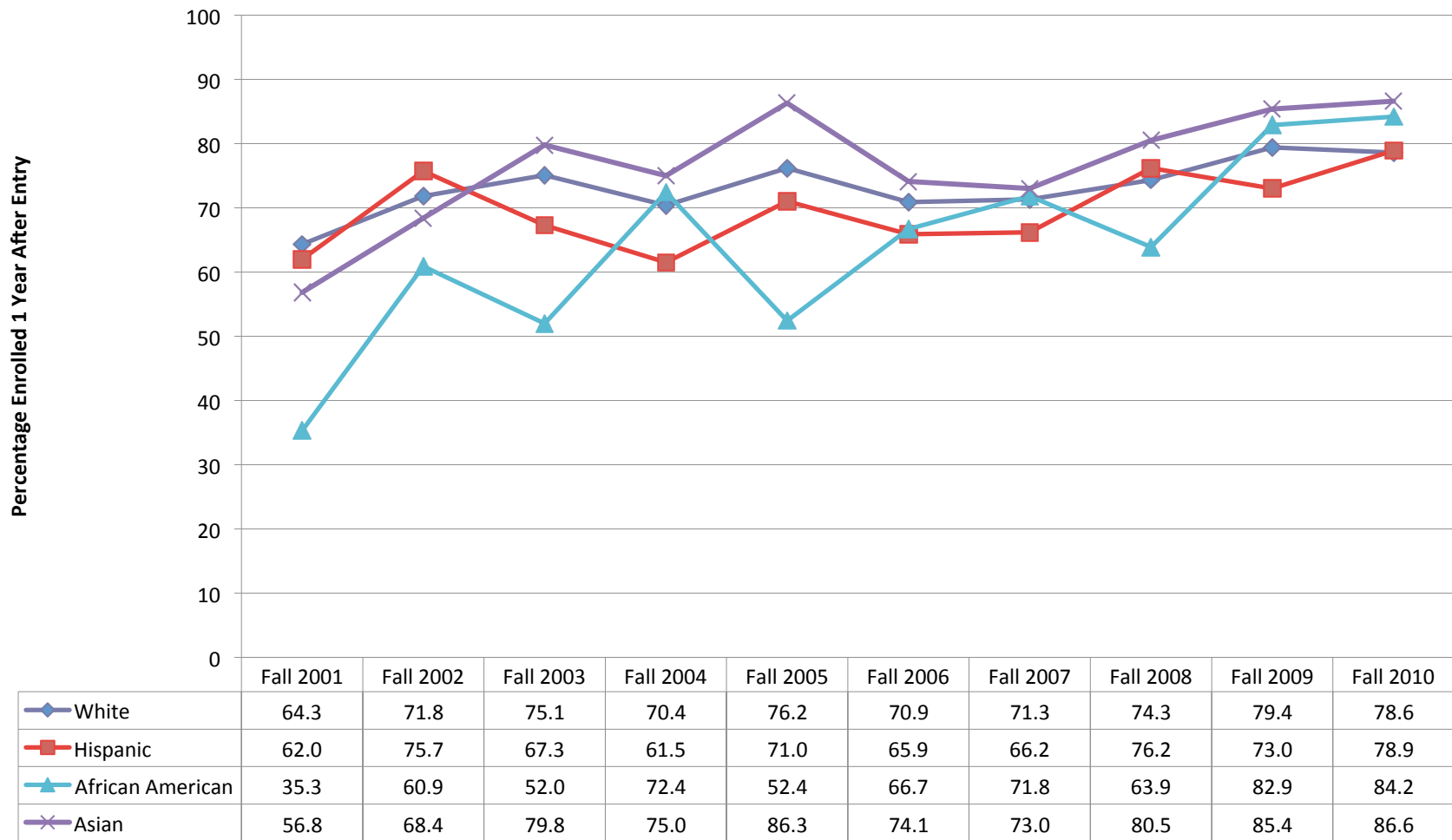
## 1-Year Continuation Rate by Entry Term - First-time Freshmen



**URM**=Hispanic, African American, Native American & Pacific Islander

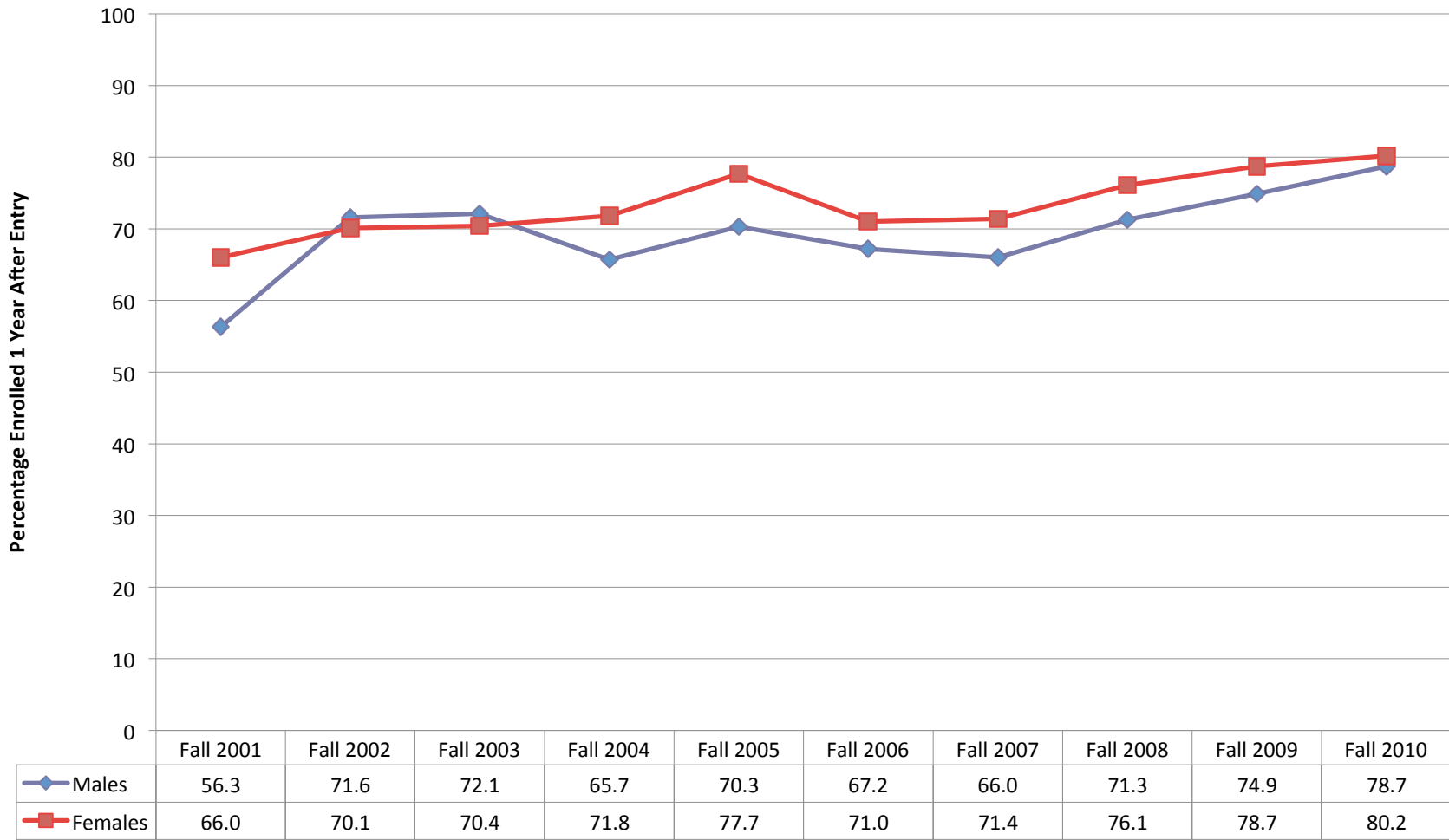
**Source:** Retention files maintained by IPA

## 1-Year Continuation Rate by Entry Term - First-time Freshmen



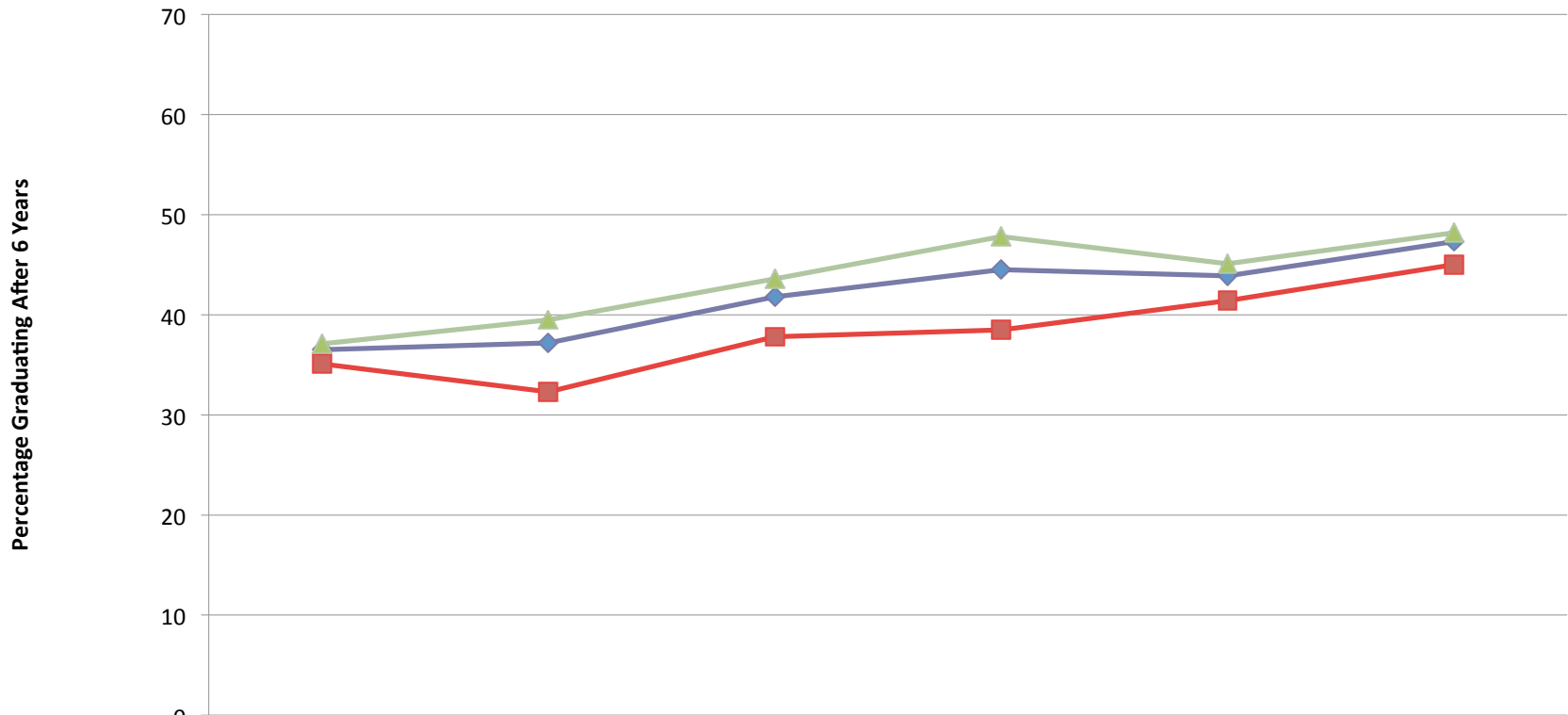
**Source:** Retention files maintained by IPA

## 1-Year Continuation Rate by Entry Term - First-time Freshmen



**Source:** Retention files maintained by IPA

## 6-Year Graduation Rate by Entry Term - First-time Freshmen

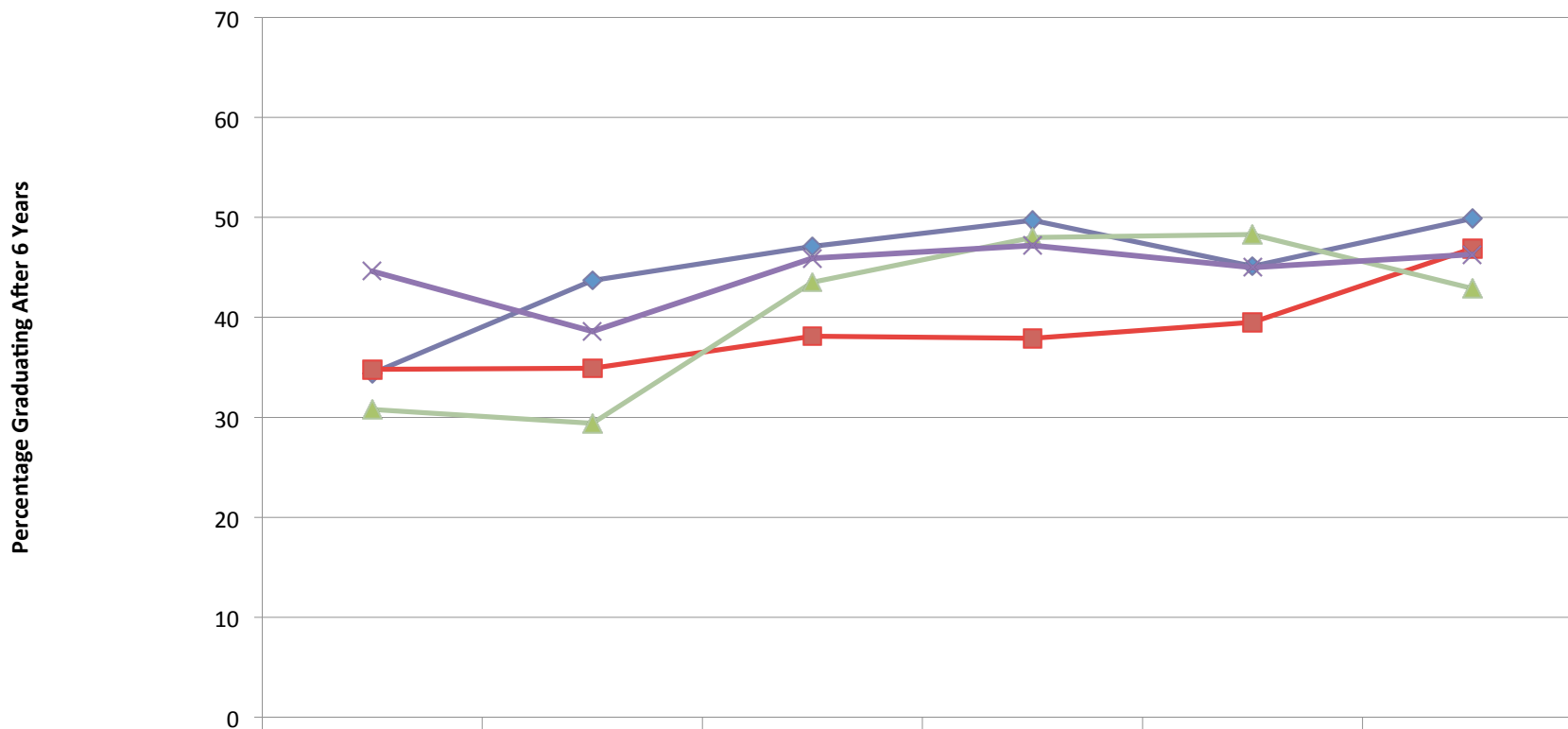


	Fall 2000	Fall 2001	Fall 2002	Fall 2003	Fall 2004	Fall 2005
All Students	36.5	37.2	41.8	44.5	43.9	47.3
URM	35.1	32.3	37.8	38.5	41.4	45.0
Non-URM	37.1	39.5	43.6	47.8	45.1	48.2

**URM**=Hispanic, African American, Native American & Pacific Islander (Excludes Other, Unknown & Non-citizen)

**Source:** Retention files maintained by IPA

## 6-Year Graduation Rate by Entry Term - First-time Freshmen



	Fall 2000	Fall 2001	Fall 2002	Fall 2003	Fall 2004	Fall 2005
White	34.4	43.7	47.1	49.7	45.1	49.9
Hispanic	34.8	34.9	38.1	37.9	39.5	46.9
African American	30.8	29.4	43.5	48.0	48.3	42.9
Asian	44.6	38.6	45.9	47.2	45.0	46.3

**Source:** Retention files maintained by IPA

## 6-Year Graduation Rate by Entry Term - First-time Freshmen



**Source:** Retention files maintained by IPA