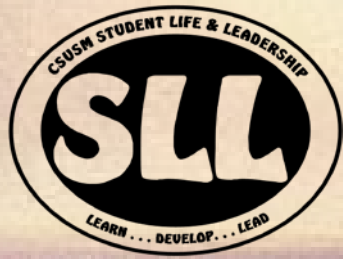


ADVISOR INFORMATION SESSION



www.csusm.edu/sll

THURSDAY, NOVEMBER 17TH 2011

OVERVIEW:

- 1. Introductions**
 - 2. SLL Overview**
 - 3. Recognition Process & Officer Eligibility**
 - 4. Role of an Advisor**
 - 5. Campus Event Planning & 25 Live**
 - 6. Sources of Funding**
 - 7. Policy Overview**
- EO 1006, Alcohol Policies, Travel, Hazing**

STUDENT LIFE & LEADERSHIP

- Student Organizations
- Fraternity/Sorority Life
- Leadership Programs
- Multicultural Programs
- Off-Campus Housing
- Orientation & New Student Programs



SLL STUDENT ORG SUPPORT:



Joshua Galea'i



Shannon Nolan



Angie Lopez



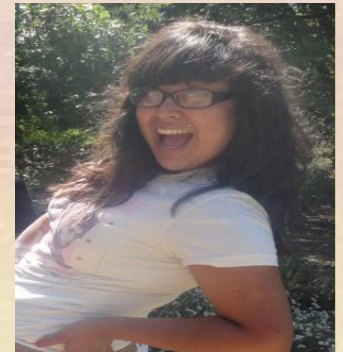
Adam Hayes




Nicki Croly



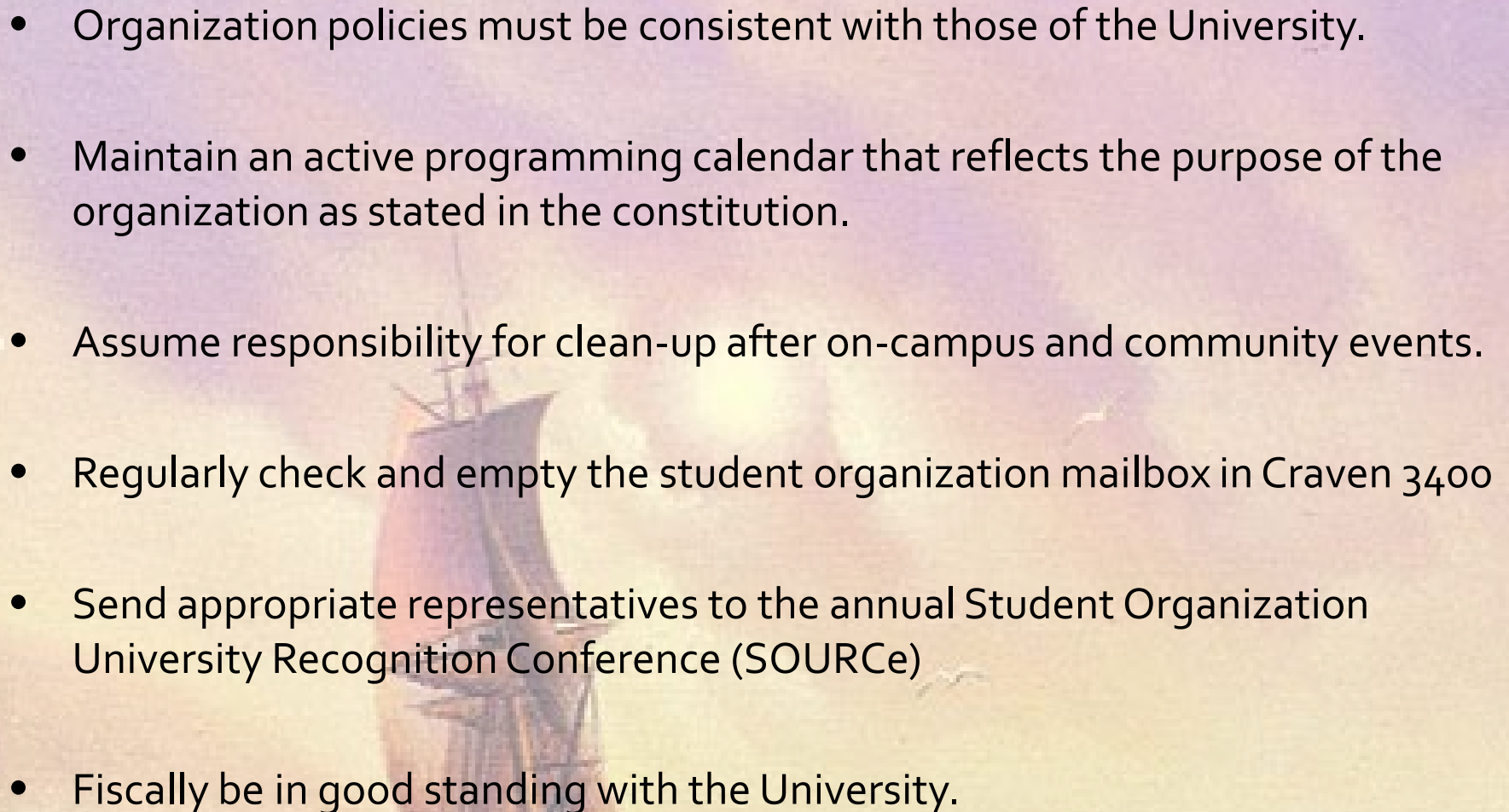
Julie Mattingly



Kimmy Palafox



STUDENT ORG RESPONSIBILITIES

- Organization policies must be consistent with those of the University.
 - Maintain an active programming calendar that reflects the purpose of the organization as stated in the constitution.
 - Assume responsibility for clean-up after on-campus and community events.
 - Regularly check and empty the student organization mailbox in Craven 3400
 - Send appropriate representatives to the annual Student Organization University Recognition Conference (SOURCE)
 - Fiscally be in good standing with the University.
- 

RECOGNITION PROCESS

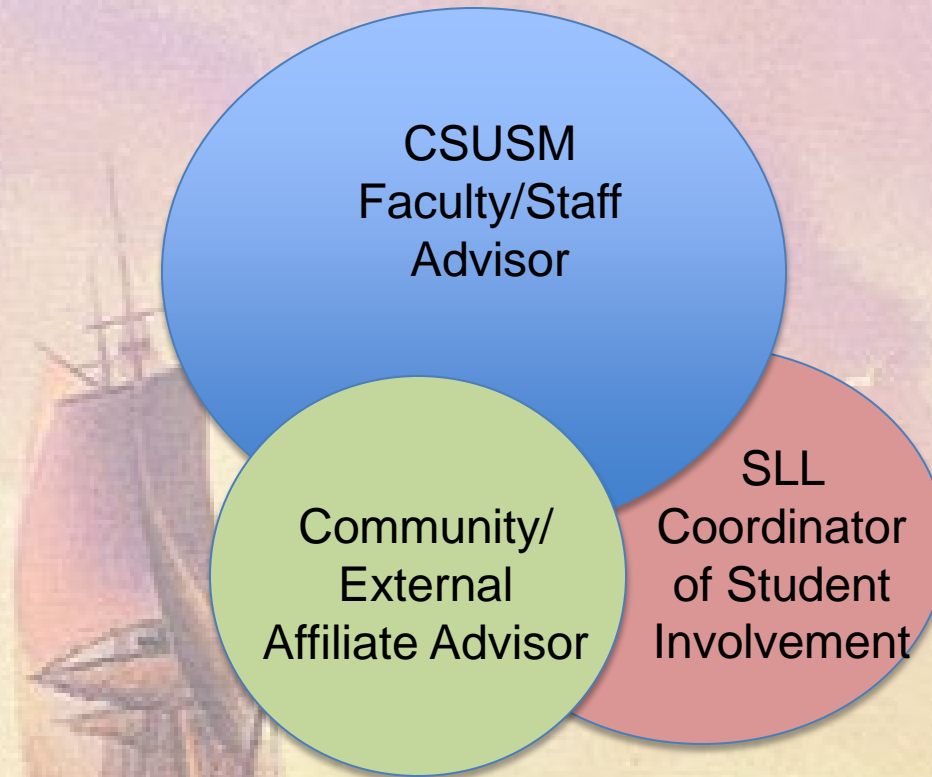
Annual basis per CSU E.O. 1006 (FALL)

- 1) SLL verifies President & Treasurer:
 - 1) 2.0 GPA
 - 2) Less than 150 units, or 125% of major units
 - 3) Dean of Students Check
- 2) Constitution on File
- 3) Officer Update Form
- 4) Advisor Agreement Form
- 5) Membership roster



ADVISING: LEVELS OF SUPPORT

- Organizations have 2-3 advisors





ORGANIZATION ADVISING ROLES

1. Faculty/Staff Advisor (YOU) 😊

- Annual agreement
- Organization's primary support

2. SLL Student Involvement Coordinator

- Event Planning
- Campus policy/protocol support

3. Community/External Advisor

- Affiliated with an umbrella group or external entity
- Inter/national organization expert





Mentor

Team **B**u**i**l**d**e**r**

Conflict Mediator

Reflective Agent

EDUCATOR

Motivator

Policy Interpreter

25 LIVE & EVENT PLANNING

25 Live: (Do NOT use Explorer)

- Log-in & password = listserve
 - *Username:* org-latinocomorg
 - *Password:* orglatinocomorg



- Level 1, 2, 3 Event Management
- SLL Advisor and Fac/Staff Advisor roles in supporting Level 3 Events

SOURCES OF FUNDING

- ASI = student org BANK
 - Deposits = Cashiers (CRA 3700)
 - Expenditure Requests = ASI (FCB 103)
- [A.S.I. Leadership Funding Board \(ALFB\):](#)
 - Event & Individual Leadership Funding
- [Co-curricular](#) (11/18/11 deadline, up to \$1000)
- [Arts & Lectures](#) (March deadline, up to \$2,300)
- Fundraising Days (monthly)
- Dues



MANAGING RISK

- Alcohol Policy
- Travel
- Hazing
- Off-Campus Events



ON-CAMPUS ALCOHOL POLICY

*Zero tolerance on alcohol for ASI Campus Rec Club sports.

Stipulations for other Student Organizations:

1. *Request for Facilities Use and Alcohol approval Request* at least 4 weeks in advance
2. Wine and Beer only
3. Always Accordance with the Law – No Minors
4. Responsible Host Training Required

LONG Process, SLL, ASI, VPs, Advisors signatures required

**Advice:
Have fun without it!**



ALCOHOL ADVERTISEMENT POLICY: CSU E.O. 966

- Logo can't be bigger than wording on sign, no drink specials mentioned, needs VPSA approval
- Alcohol will be banned from all CSU inter-collegiate athletic events.
- Alcohol is banned from all CSUSM inter-collegiate athletic events as well as ASI Campus Rec events.



TRAVEL PROCEDURES

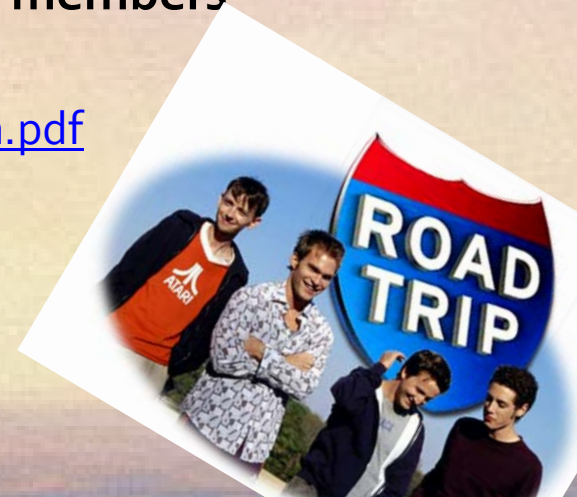
- **Domestic Travel Steps:**

<http://www.csusm.edu/studenttravel/travel/domestic.html>

- 1) Notify SLL
- 2) Each student traveler will file a "Release" and "Student Conduct Agreement" PRIOR to travel
- 3) Notify SLL: Julie Mattingly (Associate Director) once forms have been executed
- 4) E-mail a scanned copy of each doc to the University Police Department

If travel is funded or includes a significant percentage of members participating visit VPSA:

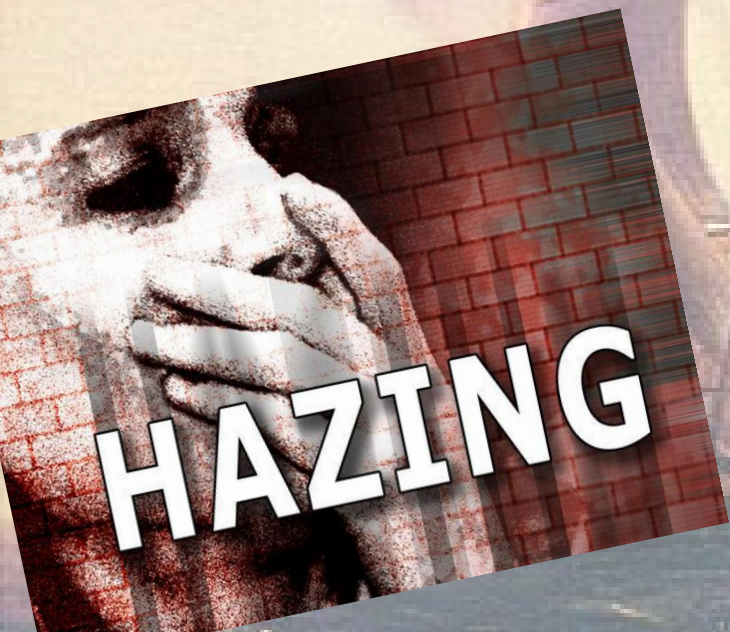
<http://www.csusm.edu/studentaffairs/travel/links/travelthrusa.pdf>



HAZING FACTS:

- 55% of college students involved in clubs, teams, and organizations have experienced hazing.
- Nine in 10 students who experienced hazing by the study's standard did not think they had been hazed.
- 69% of students who belonged to a student activity reported they were aware of hazing activities occurring in student organizations other than their own.

- *Hazing in View: College Students at Risk Initial Findings from the National Study of Student Hazing*





HAZING EDUCATION

Zero-tolerance around hazing

- [University Hazing Education Team \(UHET\)](#)
- An introduction was provided at SOURCe 9/23

Contacts:

Student Life & Leadership	760-750-4970
Hazing Hotline	1-888-NOT-HAZE
University Police	760-750-4567



SLL CONTACTS

Josh Galea'i

*Coordinator of Student
Involvement*

P: (760) 750-4962

F: (760) 750-3033

jgaleai@csusm.edu

Point of Contact for: Cultural,
Political, Recreational,
Religious, Service, Special
Interest Organizations

Shannon Nolan

*Coordinator of Student
Involvement*

P: (760) 750-4973

F: (760) 750-3033

snolan@csusm.edu

Point of Contact for:
Academic Organizations &
Honor Societies

Nicki Croly

*Coordinator of Fraternity &
Sorority Life*

P: (760) 750-4952

F: (760) 750-3033

ncroly@csusm.edu

Point of Contact for: All
Sororities & Fraternities, and
Interest Groups



QUESTIONS?

