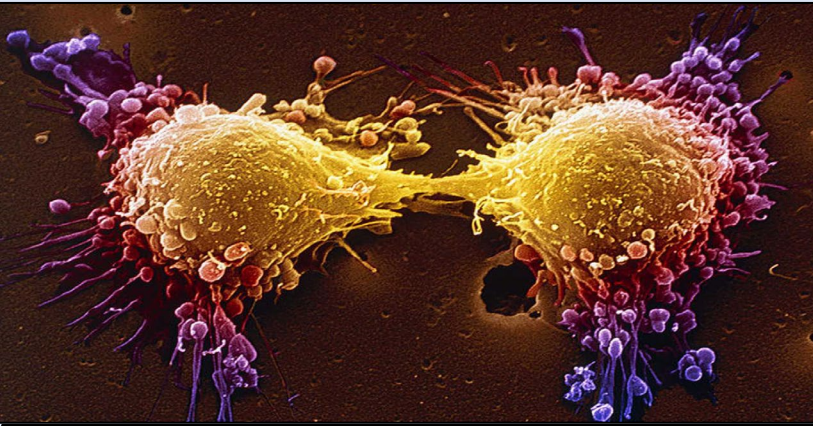




## REU- THE PLASTICITY OF CELLS, ORGANISMS, AND COMMUNITIES

June 2 - August 9, 2025



Use cutting edge tools and techniques to uncover the molecular and cellular mechanisms of how cells, organisms, and communities adapt to stochastic environmental conditions by coordinating growth with morphological, physiological, and behavioral traits to maximize fitness. Research projects range from probing the genetics of phenotype, to investigating simple sequence repeats and genomic fluidity, microbiota and microbiome-mediated plasticity, to physiological adaptations to climate change.

### Program Participants will Receive:

\$6,250 Summer Stipend

\$550 Travel Stipend for out of region participants

Free Campus Housing

Modest Per Diem

### Eligibility Requirements:

US Citizen or Permanent Resident

Major in Biological Sciences or Related Field

College Transcripts

2 Letters of Recommendation

Responses to Questions Asked

For more information visit <http://www.csusm.edu/bioreu> or Email Program Directors:

Dr. Betsy Read: [bread@csusm.edu](mailto:bread@csusm.edu)

Dr. Carlos Luna Lopez: [clunalopez@csusm.edu](mailto:clunalopez@csusm.edu)

**Application Deadline: March 1, 2025 via NSF ETAP site**

