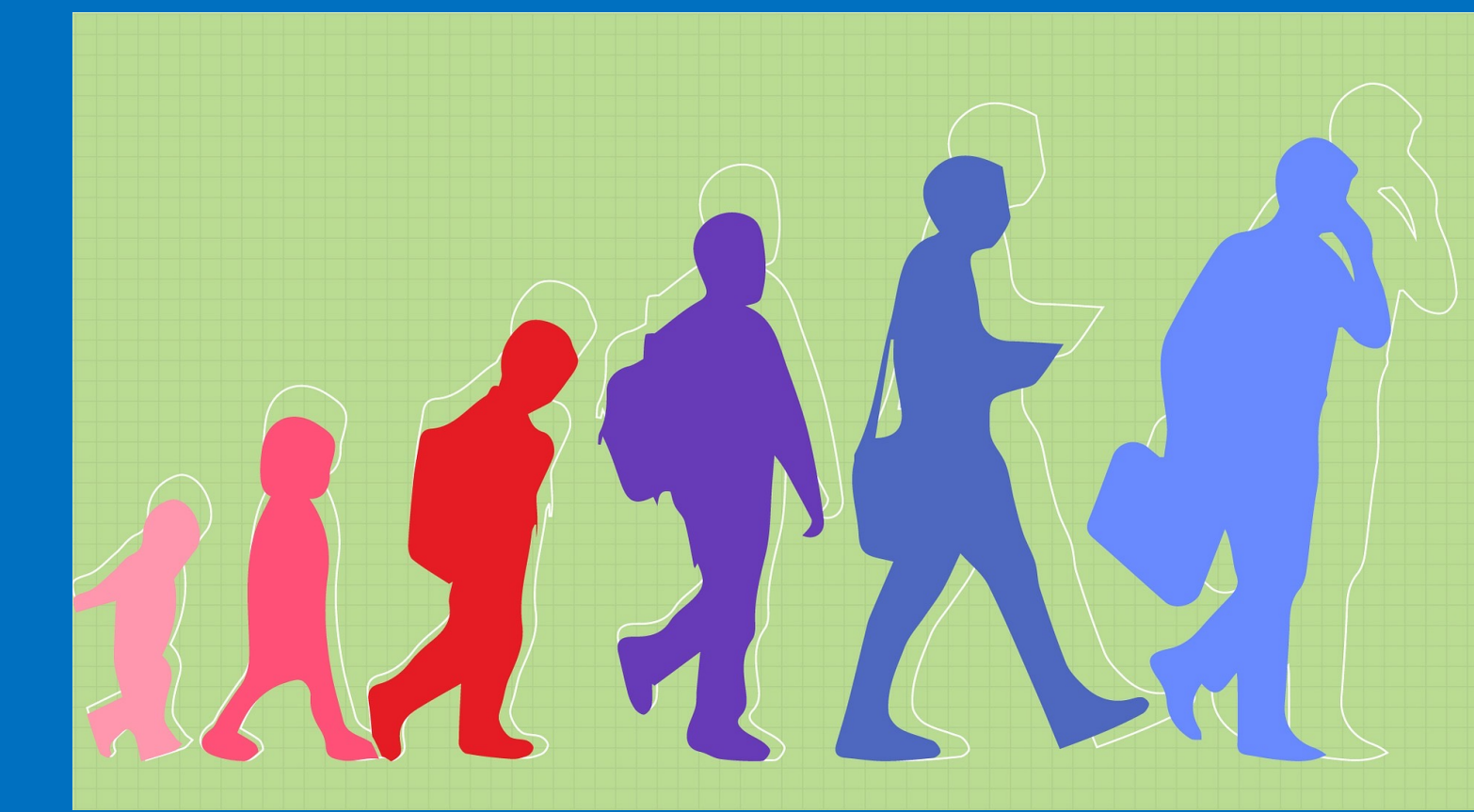


# Information for Child & Adolescent Development Majors



## Child & Adolescent Development (CHAD) Program at CSUSM

The CHAD major in the Psychology Department focuses on the scientific study of developmental processes that occur from conception through the end of adolescence. CHAD classes focus on research in developmental science. CHAD graduates receive an excellent foundation for subsequent careers working with children and adolescents in various fields.

## Major Requirements

### Lower Division Requirements (15 units)

PSYC 100	Introduction to Psychology
PSYC 210	Child Growth & Development
PSYC 215	Child, Family, & Community
PSYC 220	Introduction to Statistics in Psychology
PSYC 230	Research Methods in Psychology

### Language Proficiency (0-9 units)

This requirement can be met in one of eight ways. See CHAD Major Worksheet on website.

### Required Core Courses (18 units)

PSYC 331	Infancy & Childhood
PSYC 349	Adolescence: Theories & Research
CHAD 370	Risk & Resiliency in Childhood/Adolescence
PSYC 395	Laboratory in Developmental Psychology
CHAD 491	Children, Adolescents, & Social Policy
CHAD 496	Observation & Assessment Lab

### Minimum Grade of "C"

You must earn a grade of "C" or higher in every course in order to count it toward the major. If you earn a "C-" or lower, you will have to repeat the course.

### Upper Division Requirements (15 units)

Select 1 course to fulfill each of the clusters:

Cluster A	Atypical Child & Adolescent Development
Cluster B	Contexts of Child & Adolescent Development
Cluster C	Understanding Others
Cluster D	Intrapersonal Development
Cluster E	Research/Working with Children & Adolescents

### Breadth Requirement (3 units)

The course you choose for your UDGE area DD (social science) course cannot be a Psychology or CHAD course – it must be a course outside of our department.

### Transfer Students!

Will your transfer courses meet the lower-division requirements for the major?

For articulation with community colleges, visit [www.assist.org](http://www.assist.org)

### Background Check Requirement



CHAD 496 will take place at a setting that requires background checks including: (1) fingerprinting and background check through LIVESCAN, (2) Tuberculosis test, (3) Proof of MMR immunity, (4), Tdap immunization, (5) Flu shot. This process must be completed no later than 6 weeks before the start of the semester in which a student enrolls in CHAD 496.

### Setting Yourself Up for Success



- Plan to spend at least 8 hours per week for each 3-unit course. For a full load of 5 classes, this is a minimum of 40 hours per week devoted to school. Consider taking 4 classes for school-work-life balance and staying on track to graduate by taking courses in summer sessions.
- Stay connected and gain assistance by visiting your professors' office hours, get assistance with statistics or research by visiting *PARL*, and get involved in university and department activities.

### Helpful Resources



CHAD Program website, <http://www.csusm.edu/chad>  
 Psychology Dept. website, <https://www.csusm.edu/psychology>  
 Psychology Academic Resource Library (PARL),  
<https://www.csusm.edu/psychology/currentstudents/parl.html>  
 CSUSM Student Resources & Services, <https://www.csusm.edu/students>