

2021 Diverse Learning Environments Survey

Campus Climate Highlights Making an Impact at CSUSM!



CSUSM

What is campus climate?



"The current attitudes, behaviors and standards of faculty, staff, administrators and students concerning the level of respect for individual needs, abilities and potential."
(Susan Rankin, 2008)

COVID-19 Pandemic

Students were asked to respond to statements about CSUSM's response to the COVID-19 Pandemic.

93% believe the institution's pandemic response prioritizes the health and safety of students

86% support the decision leaders have made with respect to the current level of in-person operations on campus

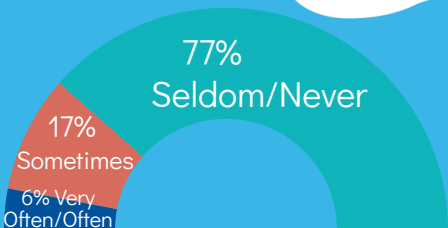
86% believe campus leadership has communicated effectively regarding the pandemic

84% would rather hear a person's conflicting view than have them remain silent

Intergroup Relations

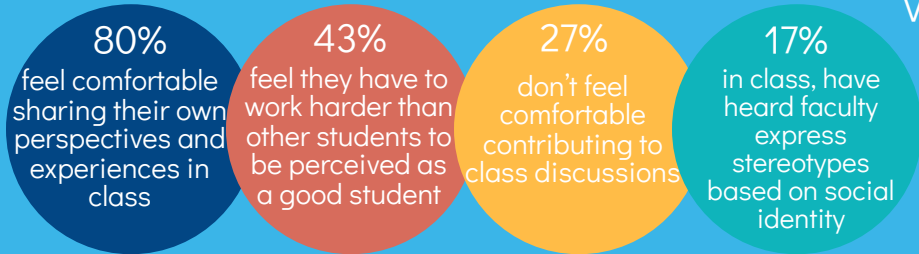


Respondents share how often they heard insensitive or disparaging remarks about race/ethnicity from other students



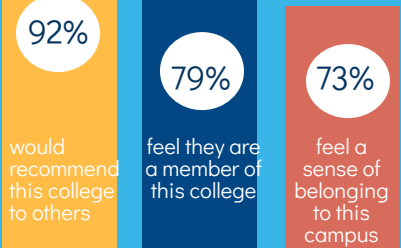
CSUSM's Campus Climate

Classroom Climate

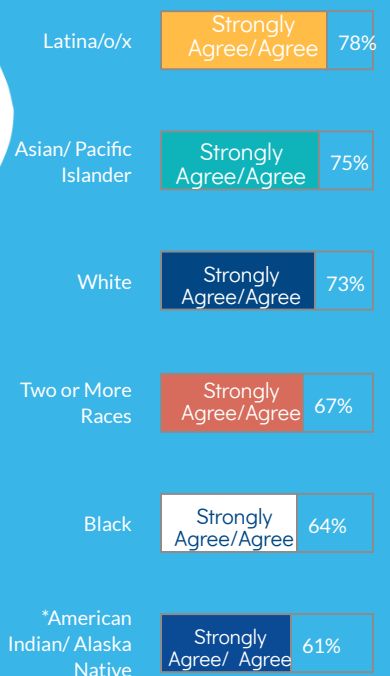


Sense of Belonging

Students share their feelings of sense of belonging on campus



"I feel a sense of belonging to this campus"



Academic Validation

72% feel that faculty often encouraged them to ask questions and participate in discussions in class

Themes From COVID-19 Related Open Ended Questions

- Effectiveness with Online Learning Varies with Faculty**
"The shift to Zoom was easier for some instructors and they were still able to keep content interesting, whereas others had a more difficult time and the content was very dry."
- Flexibility Needed from Faculty**
"Online class format seems to have made professors in general assign more work and be less lenient with attending class because it is assumed that because class is online that students can and should have access to it all the time..."
- Improved Communication/Engagement with Faculty**
"It's difficult to get an audience with a professor if their syllabus lists office hours as "via email". Still waiting for a reply and it's been a couple days. If only professors had a set day and time to hold office hours. That would be great."
- Compassion/Understanding for Student Needs**
"Make professors understand that we are at home with our children so if we need to turn off our camera for a quick second it shouldn't be an issue. I tend to turn off my camera when I am serving my son a snack or going to use the restroom. Yes, we are in class but we also are at home with little ones."

Student Voices



The Survey Administration

The Diverse Learning Environments Survey was administered from March 1- March 26 2021 to all students enrolled in a degree, credential, or certificate program n= 15,017
1,514 students responded to the survey resulting in a 10.1% response rate.
This infographic summarizes quantitative and qualitative responses. Strongly Agree/Agree responses are combined.
*Race/ethnicity for Native American/Alaska Native respondents includes those who also indicated they are Two or more Races
Please contact Institutional Planning & Analysis at survey@csusm.edu with questions.

