



## Three Important Reasons Why You Should Join CSU-ERFSA

1. As a retired annuitant with CalPERS, you enjoy the benefits of one of the best retirement programs in the nation. With California facing difficult financial problems, those benefits are subject to continuing review. To make certain retiree benefits are not eroded in coming years, a strong and vigilant organization is needed to protect your interests. The California State University Emeritus and Retired Faculty and Staff Association, is the only organization working solely on behalf of CSU retirees. CSU-ERFSA works with RPEA (Retired Public Employee Association) and other members of SCORE (Statewide Coalition of Retired Employees) to monitor legislative actions in Sacramento, maintains liaison with CalPERS and other agencies, and provides information that is of interest to our members.

2. Problems with health care providers can be frustrating. The CSU-ERFSA staff will direct you to the appropriate office at CalPERS to assist you. The Health Benefits Committee monitors member concerns and alerts CalPERS administrators if the problems appear to be systemic. The Committee also provides feedback to CalPERS on proposed benefit changes and alerts members to modifications in health, dental, pharmaceutical and long-term care benefits.

3. The statewide CSU-ERFSA organization supports the campus affiliated retiree organizations, both financially (by returning 15 percent of the dues you pay CSU-ERFSA) and organizationally (through communicating information about successful programs or initiatives conducted on the 23 CSU campuses). Your support of CSU-ERFSA strengthens your local campus retiree group.

**2022-2024**

### OFFICERS AND COMMITTEE CHAIRS

**Barry Pasternack**  
*Fullerton*  
President

**Tom Donahue**  
*San Diego*  
Vice President

**Bernadette Cheyne**  
*Humboldt*  
Secretary

**Susan Holl**  
*Sacramento*  
Treasurer

**Bill Blischke**  
*Dominguez Hills*  
Past President

**Ted Anagnoson**  
*Los Angeles*  
Reporter Editor

**Mark Shapiro**  
*Fullerton*  
Webmaster

#### *Committee Chairs*

**Marshelle Thobaben**  
*Humboldt*  
Grant Awards

**Bethany Shiflett**  
*San Jose*  
Archivist

**David Wagner**  
*Sacramento*  
Health Benefits

**Robert Girling**  
*Sonoma*  
Legislative Affairs

**Ed Aubert**  
*Stanislaus*  
Membership

**Thomas Donahue**  
*San Diego*  
Retirement Concerns

#### *Staff*

**Merry M. Pawlowski**  
*Bakersfield*  
Executive Director

**Melanie Mamakos**  
*Office Manager*



T: (818) 677-6522

F: (818) 677-6511



[csuerfsa@csun.edu](mailto:csuerfsa@csun.edu)

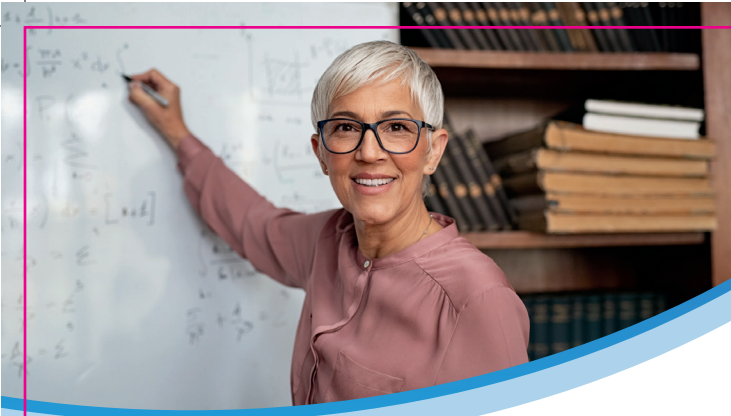
[www.csuerfsa.org](http://www.csuerfsa.org)

# California State University EMERITUS AND RETIRED FACULTY ASSOCIATION

**2022-2024**

We are the only not-for-profit organization that works exclusively for the benefit of California State University System retirees.





## The Emeritus and Retired Faculty and Staff Association

The Association was founded in 1985 in response to threats to reduce or eliminate CSU retiree rights and members of the university community. Accomplishments over the years include:

**Persuading** the CSU Board of Trustees to adopt the resolution which established that "the emeritus faculty shall be deemed to be continuing members of the academic community and shall have privileges on the same basis as they are enjoyed by the general faculty." CSU-ERFSA works to help ensure campus retiree resolutions are implemented.

**Protecting** employees' retirement funds. Working with other public employee organizations, we secured the passage of Proposition 162, the California Pension Protection Act, that provides protection against the use of pension funds for general budget purposes.

**Securing** voting membership for a retired faculty member on the CSU Academic Senate. The CSU-ERFSA State Council appoints the retired faculty member of the CSU Academic Senate.

**Assisting** campus retiree organizations to obtain benefits that have been available on other CSU campuses. Retiree parking permits from any CSU campus are now honored on almost all CSU campuses; life-time free parking privileges for spouses of deceased retirees is offered on most CSU campuses; and retired faculty are now able to serve on graduate committees at many CSU campuses. We are constantly seeking to extend and strengthen the role of retirees on the CSU campuses.

*A more complete list can be viewed by visiting the accomplishments page on our website at [www.csuerfsa.org](http://www.csuerfsa.org).*

The Association maintains a website at [www.csuerfsa.org](http://www.csuerfsa.org) that contains current information on issues of interest to retirees. The website is updated, often on a daily basis, as news items become available. A newsletter, the Reporter, is published four times annually.

The State Council, which meets regularly is the governing body of CSU-ERFSA. Membership includes representatives from campus affiliated retiree groups, delegates and chairs of all standing committees. A paid staff that includes an Executive Director and an Office Manager handle day-to-day operations



### California State University Emeritus and Retired Faculty and Staff Association

Last Name		First Name		Middle Initial		Social Security Number	
Home Address - Number and Street		City		State		E-Mail address	
Date Retired		CSU Campus		Department		Home Phone - including area code	

Please enroll me as a CSU-ERFSA member. I hereby authorize deductions to be made from my retirement warrants by Public Employees' Retirement System for the payment of dues to the CSU Emeritus and Retired Faculty and Staff Association. I further agree that CSU-ERFSA act as my agent in payroll deduction agreements and transactions between myself, CSU-ERFSA, and the Public Employees' Retirement System. This authorization will continue in effect until I submit a timely written notice of cancellation to the CSU-ERFSA office. If you prefer to make direct annual payment of dues, multiply your monthly payment x12 and send a check for the total amount due to the CSU-ERFSA office. Your social security number is not required if you choose annual payment.

<b>Gross Monthly Retirement Benefit</b>	<b>Dues</b>	<b>Check One</b>	<b>Date</b>
Less than \$3,000	\$5 per month	<input type="checkbox"/>	
\$3,001 - \$3,600	\$6 per month	<input type="checkbox"/>	
\$3,601 - \$4,300	\$7 per month	<input type="checkbox"/>	
\$4,301 - \$5,300	\$8 per month	<input type="checkbox"/>	
\$5,301 - \$6,300	\$9 per month	<input type="checkbox"/>	
\$6,301 and above	\$10 per month	<input type="checkbox"/>	

Lifetime Member (one-time dues amount of \$1,000)

Signature \_\_\_\_\_  
 Please mail the completed form to:  
 CSU Emeritus and Retired Faculty and Staff Association  
 The Retiree Center  
 18111 Nordhoff Street  
 Northridge, CA 91330-8339