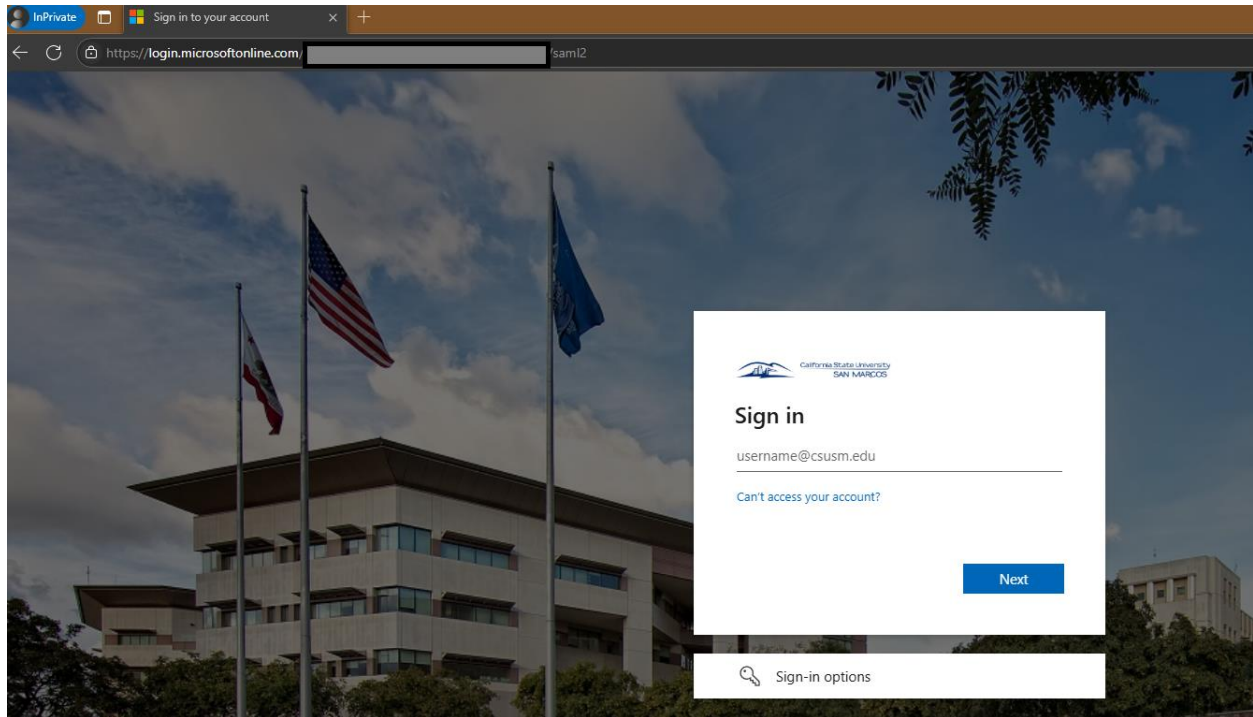


Log into <https://cougarapps.csusm.edu>

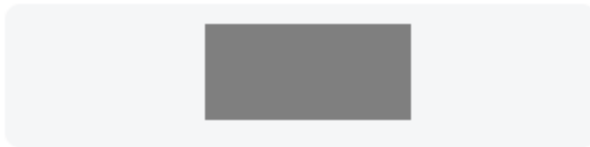


After entering your username & password, you will do MFA (DUO)



Enter code in Duo Mobile

Verify it's you by entering this verification code
in the Duo Mobile app...



Sent to [redacted]



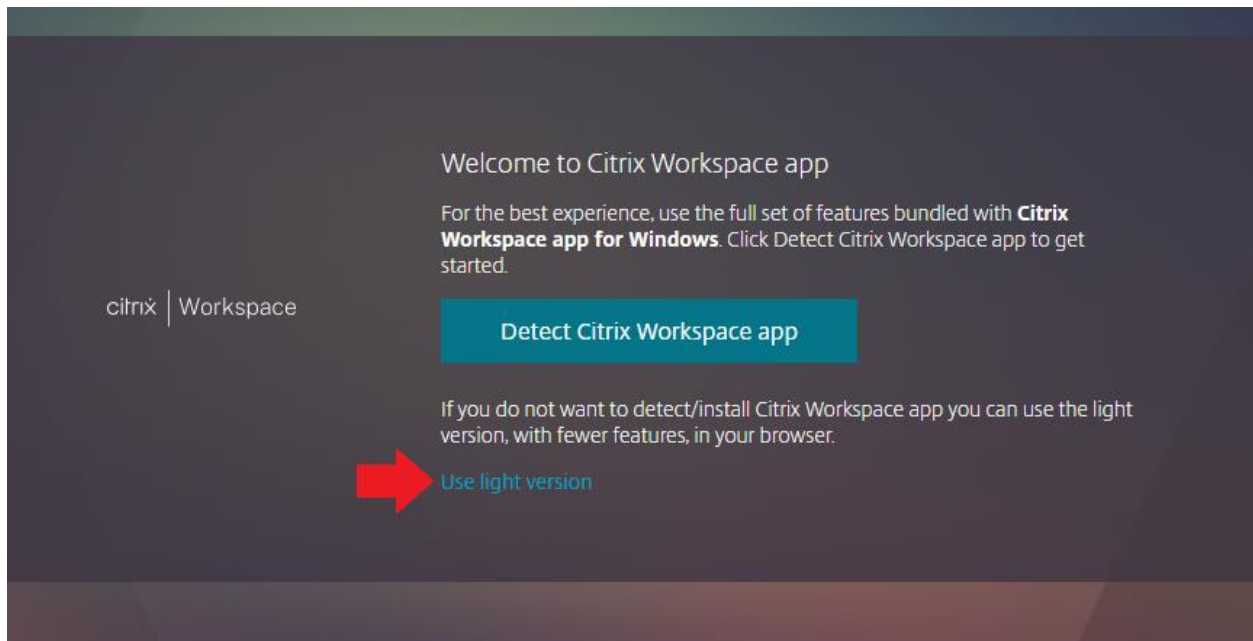
Waiting for approval...

[Other options](#)

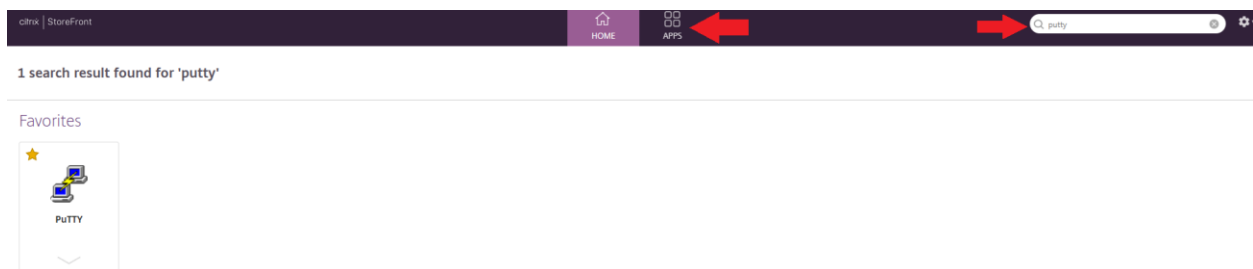
[Need help?](#)

Secured by Duo

Since you are using the light version, click Use light version on the bottom

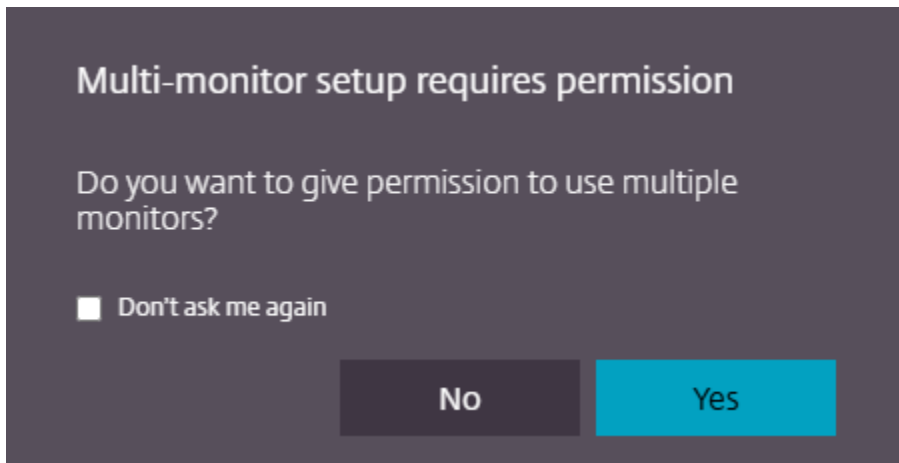
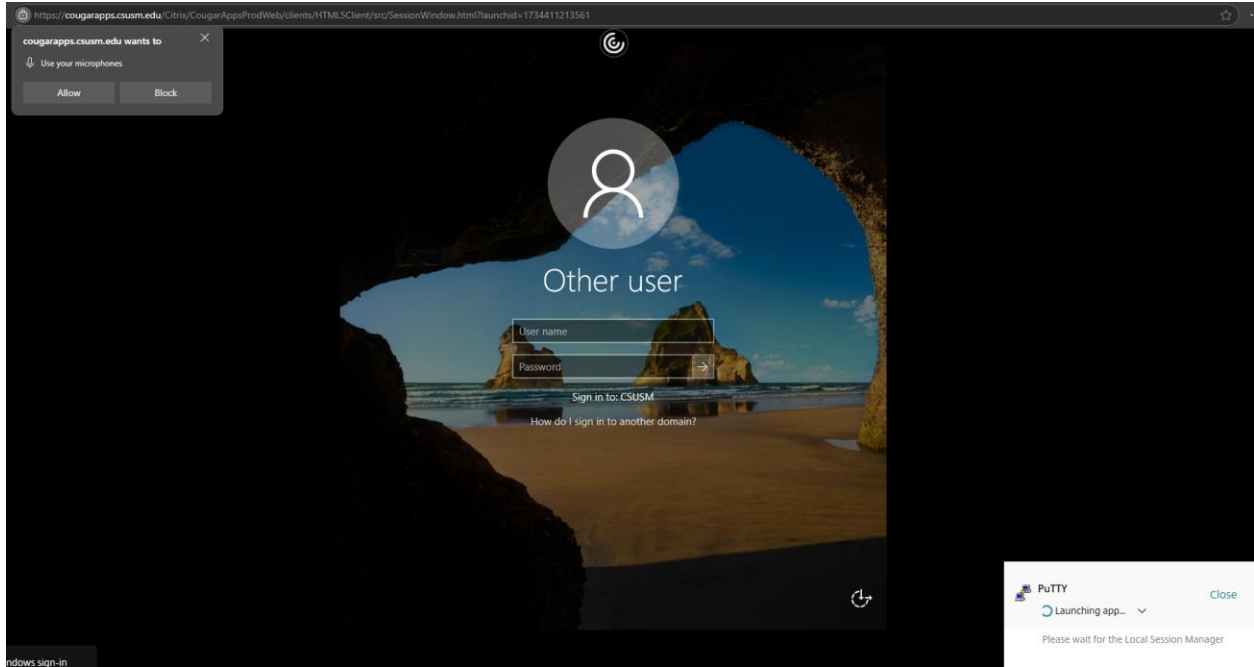


Either search for your app in the top right-hand corner, or click the apps tab

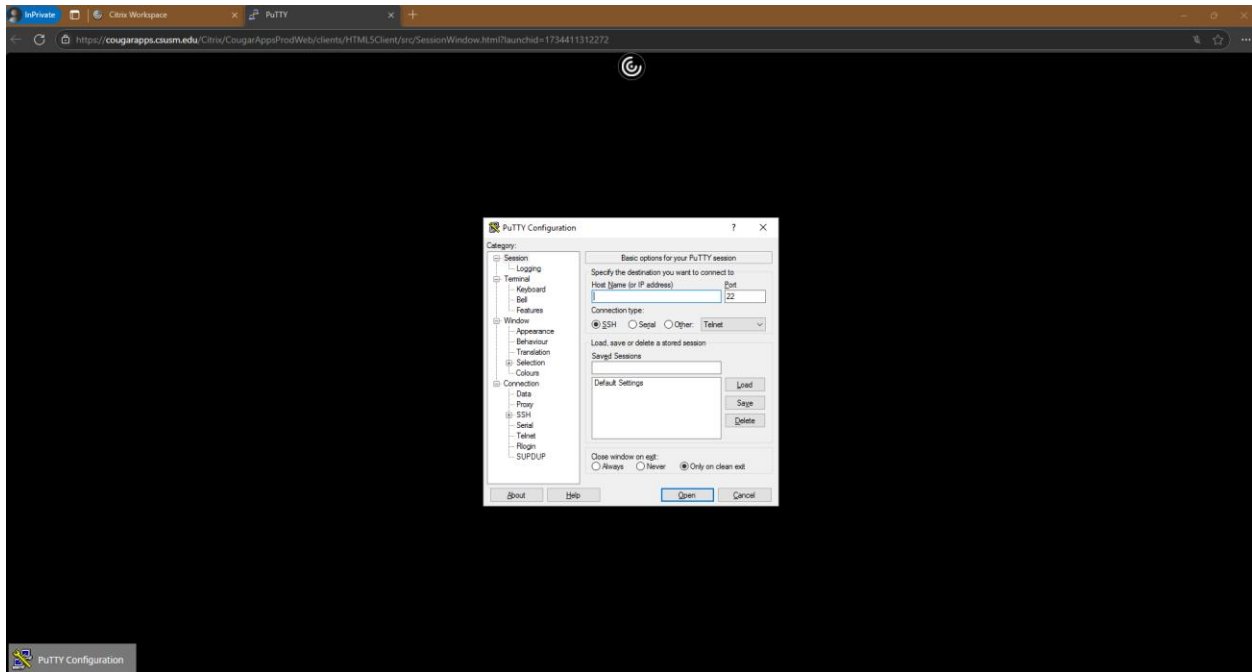


You may get prompted for device access

Enter your username and password one more time. This is you signing into the application server. Note that it reads Sign into: CSUSM



The application will fully load in the tab:



If you need to fully log out rather than disconnect, click black swirl icon, then the ..., then click Log Off



- Preferences
- Gesture guide
- Logging
- About
- Display Resolution
- Ctrl+Alt+Del
- Disconnect
- Log Off
- Fullscreen
- Map a drive
- Download
- Upload

PuTTY Configuration ? X

Category:

- Session
 - Logging
- Terminal
 - Keyboard
 - Bell
 - Features
- Window
 - Appearance
 - Behaviour
 - Translation
 - Selection
 - Colours
- Connection
 - Data
 - Proxy
 - SSH
 - Serial
 - Telnet
 - Rlogin
 - SUPDUP

Basic options for your PuTTY session

Specify the destination you want to connect to

Host Name (or IP address) Port

Connection type:
 SSH Serial Other:

Load, save or delete a stored session

Saved Sessions

Default Settings

Load Save Delete

Close window on exit:
 Always Never Only on clean exit

About Help Open Cancel