

# CSUSM

Integrated Science and Engineering Building

A GATEWAY TO INNOVATION



Concept rendering of  
the new Integrated Science  
and Engineering Building

CSUSM IS BUILDING A GATEWAY  
TO INNOVATION—TO EMPOWER  
STUDENT POTENTIAL AND DIVERSIFY  
THE FUTURE OF SCIENCE AND  
ENGINEERING IN THE REGION.

YOU CAN BE  
THE CATALYST FOR  
THIS TRANSFORMATION.



California State University  
SAN MARCOS





## A CATALYST FOR TRANSFORMATION

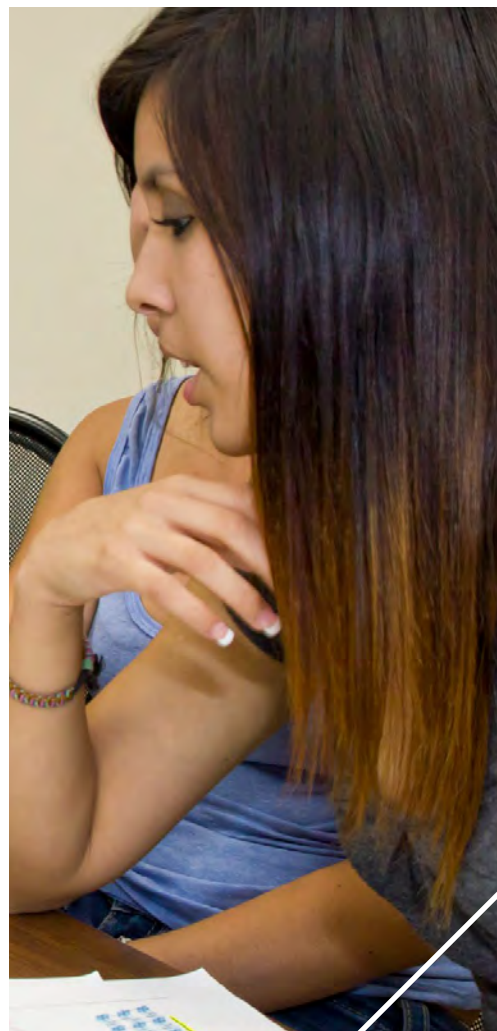
Fueled by an innovative spirit and a passion for creating solutions for the region we serve, California State University San Marcos (CSUSM) has spent the last 30 years building a reputation as a national leader in student success and social mobility. Now striding into our fourth decade with President Ellen Neufeldt—a nationally regarded expert in student success—at the helm, our vision is to be a national leader of social mobility: a first-choice university for first-generation students and future generations of students who will drive intellectual engagement, innovation and sustainability for a diverse, global society.

**CSUSM's engineering program is the recipient of \$11 Million dollars in funding from the Department of Education's Hispanic Serving Institution STEM program.**





## STUDENT SUCCESS



Esteemed within the California State University system and beyond, CSUSM is opening doors of educational opportunity for traditional students as well as those who may previously have perceived college to be out of reach. A federally designated Hispanic Serving Institution, about half of our students come from historically underserved communities while more than 50 percent are on their way to become the first in their family to earn a four-year degree. Furthermore, we are proud to be home to the highest per capita of American Indian students in the CSU as well as the highest number per capita of military-affiliated students. To welcome and support our students—in all their rich diversity of experiences and backgrounds—is both an honor and a tremendous responsibility. Their resilience and heart inspire us daily, and we are determined to continue to blaze new trails for all of them.

## TOP 5% SOCIAL MOBILITY



**CSUSM ranks in the top 5% in the Social Mobility Index (SMI) by CollegeNET**

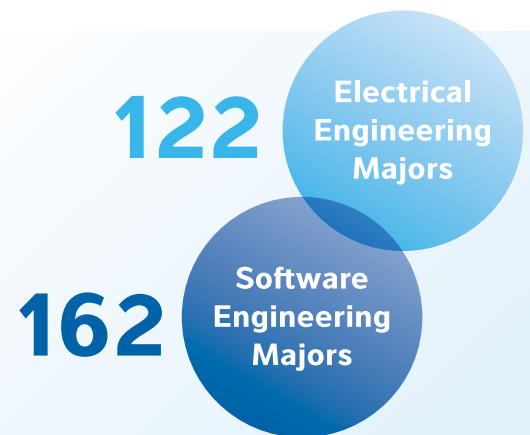
The SMI measures the extent to which a college or university educates more economically disadvantaged students (with family incomes below the national median) at lower tuition and graduates them into good-paying jobs.





As a community-engaged, anchor institution set in one of the nation's largest technology, life sciences, defense and communications clusters, we set out to develop an engineering program with the partnership of local industry leaders and employers. From the start, our guiding light was to prepare diverse students for rewarding careers in the field of engineering—careers often inaccessible to underserved communities. Thanks to the foundational support of Viasat and others, today the program is recognized as a preferred provider of software and engineering talent by the San Diego Regional Economic Development Corporation. Meanwhile, other programs in the College of Science, Technology, Engineering & Mathematics (CSTEM) are well-recognized for the myriad ways that students garner practical experience.

With support of the California State University Board of Trustees and a feasibility study completed by premier architectural firm BNIM, we now have the opportunity to lay the literal foundation that will further cement CSUSM as the nexus of innovation in our region. Our next building, an Integrated Science and Engineering Building, with your help will soon break ground. Not only is it sure to become an exciting and energetic training ground for future engineers, scientists, inventors, computer programmers and tech-minded entrepreneurs; but it will be a dynamic space that inspires collaboration and allows for enriching hands-on “learn by doing” opportunities. Notably, the building will allow us to deepen connections between our valued industry partners and our renowned faculty so that we may further equip students with the knowledge and tools they need to rise to the challenges of tomorrow.



2021-2022 Enrollment Numbers

## CHRISTIAN WILLIAMS ➡

CLASS OF '21  
GRADUATING SENIOR IN FIRST COHORT  
OF SOFTWARE ENGINEERING MAJORS

“ The thing I appreciate the most out of the program is growth. Growth professionally, soft and technical skills alike, and personally, allowing me to make wonderful relationships and take on leadership opportunities. ”



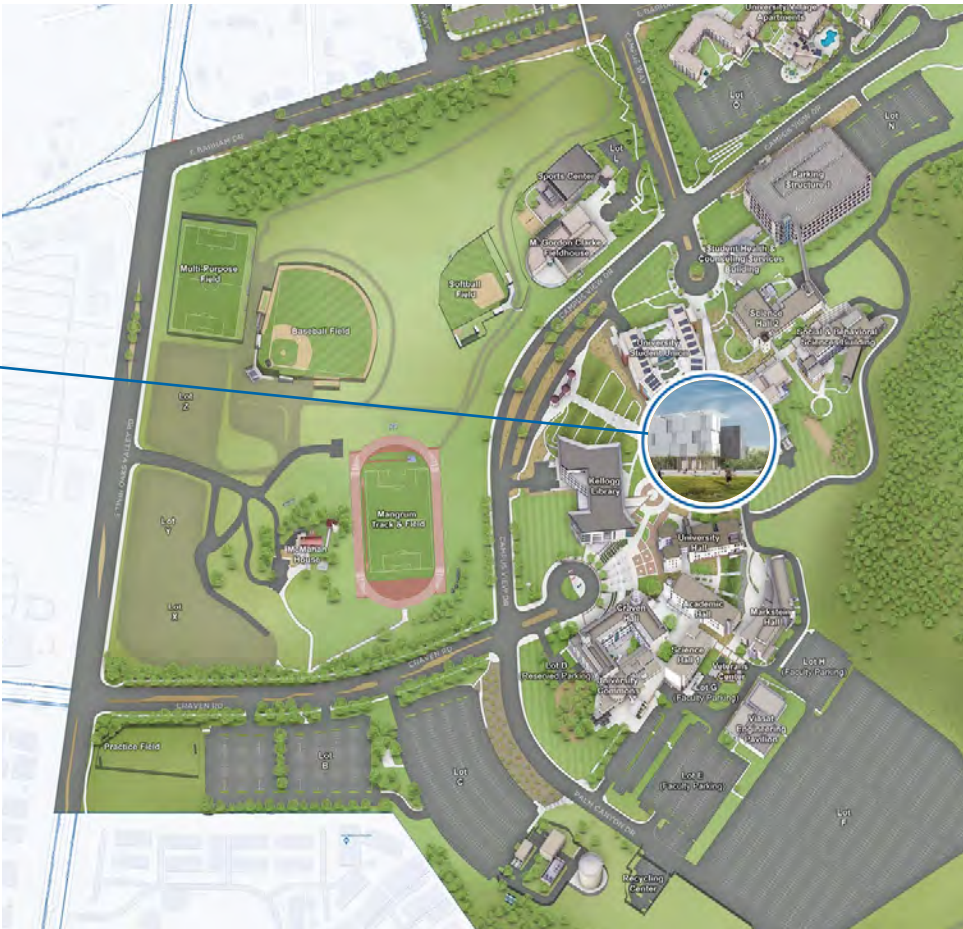
# INTEGRATING A NEW ACADEMIC HUB

The new Integrated Science and Engineering Building will integrate emerging technologies and engineering with other science disciplines and serve as a gateway for innovation in high tech, biotech and life-science industrial growth in North San Diego County.

The building will be the physical pinnacle of our university, situated against the signature rolling hills that define CSUSM's skyline and overlooking the growing metropolis of San Marcos and North City. Standing tall as the apex flagship building, its architecture will become a contemporary expression of our innovative identity.







# ENHANCED CONNECTIONS

The Integrated Science and Engineering Building is designed to enhance connections through diverse interior and exterior spaces that support spontaneous and planned interactions, including teaching and research laboratories, classrooms, meeting spaces, common areas and faculty and academic departmental offices, as well as workstations for adjunct faculty and students—all equipped with the latest tools and technologies. These resources represent CSUSM's evolving pedagogy, including distance and experiential learning, interdisciplinary collaboration, technology-enhanced learning and gamification.

With a clear focus on sustainable performance, the structure will incorporate green elements designed to minimize sun exposure, maximize shading and capture natural light and cool westerly breezes. It will advance North County architecture with a visionary, net-zero energy concept design that embodies CSUSM's collaborative, forward-thinking culture.

## WE ARE NEARING THE THRESHOLD

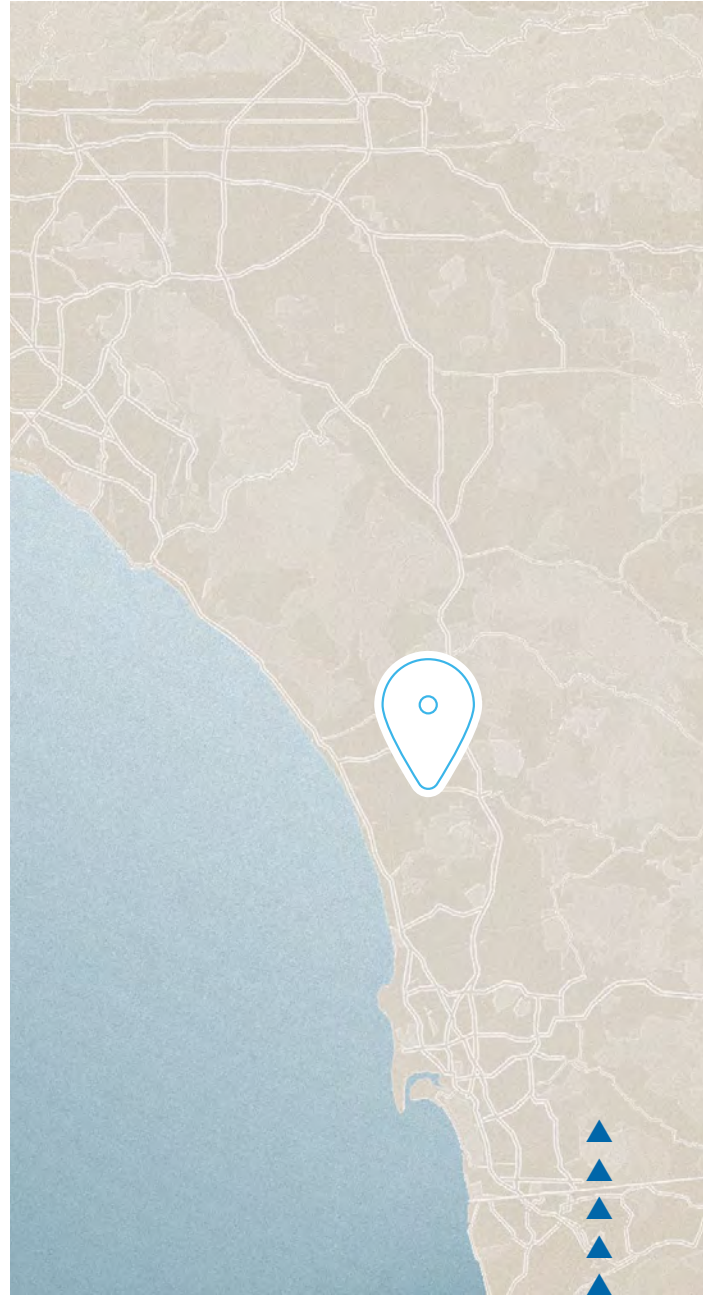
We are nearing the threshold of constructing this significant building. While state-funded plans call for a one-wing building, complementing state funding with additional, private philanthropic donations will be critical for long-term growth and sustainability by expanding the square footage and adding another wing to accommodate a roughly 100,000 square foot building in Phase I and 130,000 square foot building in Phase 2.





# 8 in 10

**CSUSM GRADUATES  
REMAIN IN OUR REGION  
TO WORK AND LEAD IN  
OUR LOCAL ECONOMY**





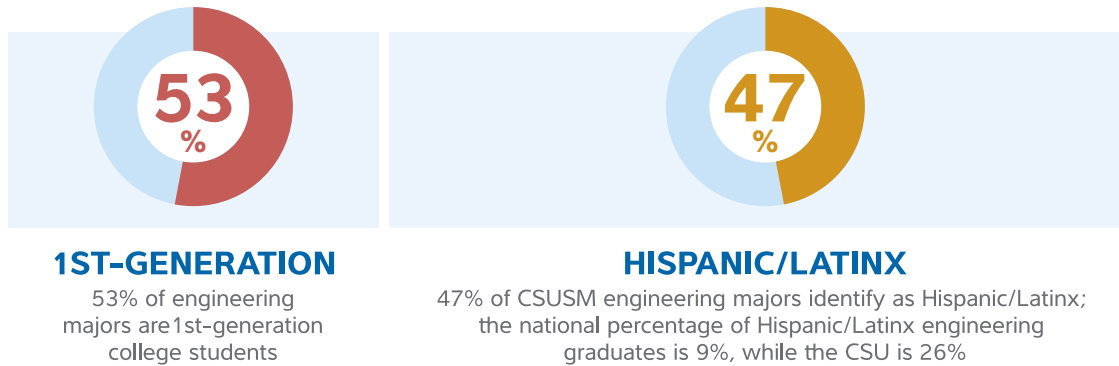
## EXPANSIVE AND INTERACTIVE

Students and faculty alike are drawn to CSUSM's practical, hands-on experiences, which cultivate and nurture regional leaders. Our faculty, leaders in their respective disciplines, have achieved broad recognition for their research via grants and awards. But above all, our faculty are teacher-scholars, dedicated to nurturing, enriching and empowering students through holistic learning experiences.

Respecting the university's established culture, the Integrated Science and Engineering Building will incorporate myriad opportunities for collaboration into a modern, mixed-use building that will serve as a stage for exciting synergies among students, faculty and industry partners.



2021-2022 Enrollment Numbers



Work done in the building's classrooms and labs will be of high interest to students, offering unprecedented access to innovative learning spaces, cutting-edge technology, computer-aided analysis and industry-standard simulation tools. Students will study and learn in classrooms and laboratories, but also connect with and support their peers in intimate indoor and outdoor gathering spaces.

By gathering departments of electrical engineering, software engineering, computer engineering, mathematics and physics into one place, the building also will transform the faculty experience, and with successful philanthropic support will allow for the addition of industrial and systems engineering. Proximity to colleagues will reinforce cohesion and inspire new interdisciplinary collaboration.



The Integrated Science and Engineering Building represents an economic investment in the future of San Diego County and Southern California, as regional demand has outpaced the education and production of new engineers and scientists. We need this building to be able to increase our ability to educate today's and tomorrow's diverse engineers and scientists.

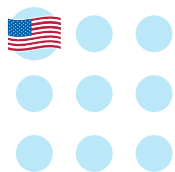
## A DIVERSE WORKFORCE PIPELINE

Our faculty and staff recognize that access to top-notch facilities is only one component of student success. CSUSM's established ecosystem shepherds each student from enrollment to graduation in an inclusive and equitable environment that includes advising, mentoring and learning communities.



Academic programming is buttressed by a peer-to-peer support structure that emphasizes collaborative learning environments such as clubs, professional student organizations and project-based study. CSUSM students lead active chapters of preeminent organizations including the Institute of Electrical and Electronic Engineers (IEEE), Society of Hispanic Professional Engineers (SHPE), Society of Women Engineers (SWE) and National Society of Black Engineers (NSBE), among many others. Hands-on laboratories teach emerging technologies, training students how to use industry-standard engineering software. Professional development workshops prepare students to embrace their chosen careers at the completion of their degree at CSUSM.





1 IN 9

STUDENTS ARE ACTIVE DUTY MILITARY,  
VETERAN OR DEPENDENT.



➔ HIGHEST LOCAL  
CONCENTRATION OF  
MILITARY PERSONNEL  
IN THE NATION

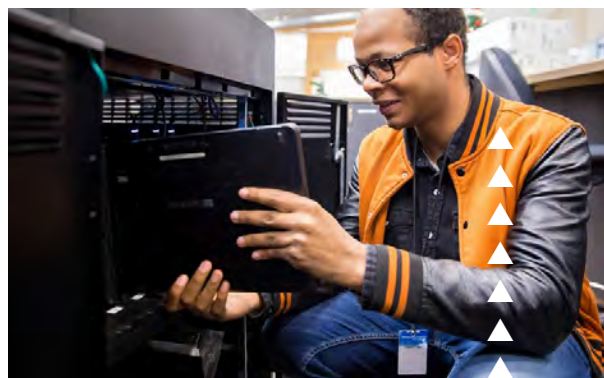
- Marine Corps Air Station Miramar
- Marine Corps Base and Marine Corps Air Station Camp Pendleton
- Naval Base Point Loma
- Naval Base Coronado
- Naval Base San Diego

➔ HIGHEST PER CAPITA OF  
MILITARY AFFILIATED STUDENTS  
IN THE CSU SYSTEM

100

## ACE SCHOLAR GRADUATES

A comprehensive, top-tier program since 2007, ACE Scholars Services supports former foster youth as they pursue their potential at CSUSM.



# INDUSTRY PARTNERS

CSUSM's industry partners provide internship opportunities, as well as cooperative-education curriculum that allows students to apply classroom learning and theory to periods of paid employment while they earn their degree. This empowers the seamless integration of cutting-edge tech and curriculum in a rapidly evolving marketplace. Our partners recognize that innovation thrives with the presence of diverse perspectives around the table and in the laboratory—exploring new ideas that haven't previously been considered and unearthing moments of discovery that will forever change the landscape of regional industry.



The CSUSM engineering program, launched in 2019, is dedicated to providing world-class engineering education and equipping tomorrow's innovative leaders for career and lifelong success. This program, which is critical to our region and state, would not have been possible without the vision and generosity of countless campus and industry partners.



The Viasat Engineering Pavilion currently serves as home to CSUSM's electrical and software engineering programs. A longtime supporter of numerous CSUSM programs, the pavilion is named in honor of the Carlsbad-based company that, together with its employees, provided foundational support to CSUSM's electrical and software engineering programs through a generous \$1.5 million gift. This transformational generosity made it possible to renovate classroom and lab space, purchase new equipment and instrumentation and support the work of students and faculty paving the way for this next visionary building.





# A FRAMEWORK FOR A FUTURISTIC VISION

The Integrated Science and Engineering Building will bring together the best qualities of our academic community: diversity, equity and inclusion; robust community engagement and responsible stewardship of resources. In the CSUSM tradition, the building will provide intimate spaces to gather, learn and collaborate while offering a confluence of uses to elevate and inspire our students, faculty, staff and community partners alike.

CSUSM is poised to have an exceptional impact on our region as our aspirational students and accomplished faculty strive to solve the grand challenges of our time, create new jobs and help drive a robust economy.

Your generosity—in embracing opportunities to name signature programmatic and structural elements—is integral to our success.

*We invite you to set a new standard for regional philanthropy by joining us in a unique and rare opportunity—making the building a reality.*

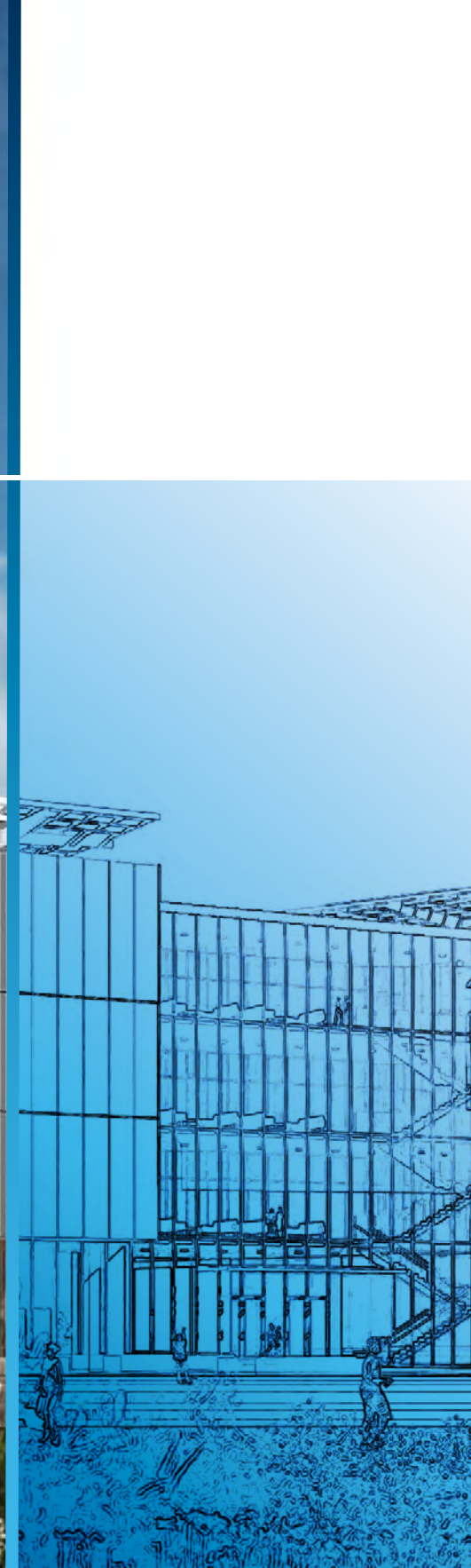
Together, we will create not only a brick-and-mortar structure but also a definitive hub for regional growth and advancement for generations to come. Together, we will advance career outcomes for students and change the face of science and engineering in San Diego County.

Together, we will compose a cadre of diverse, vibrant young professionals who will steward the future of STEM in our region.

Jessica Berger  
Vice President, University Advancement  
760-331-8053 • [jmberger@csusm.edu](mailto:jmberger@csusm.edu)

Jocelyn Wyndham  
Associate Vice President, Development  
760-750-7304 • [jwyndham@csusm.edu](mailto:jwyndham@csusm.edu)

YOU CAN BE THE CATALYST  
FOR THIS TRANSFORMATION



All gifts to California State University San Marcos are accepted and administered by **The California State University San Marcos Foundation**, an official 501 [c] [3] auxiliary organization of California State University San Marcos. The CSUSM Foundation is the University's catalyst to transform dreams into opportunities for the lives of our students and the future of our region.