



CALIFORNIA STATE UNIVERSITY SAN MARCOS

The Clarke Expansion



California State University
SAN MARCOS

The Clarke Expansion



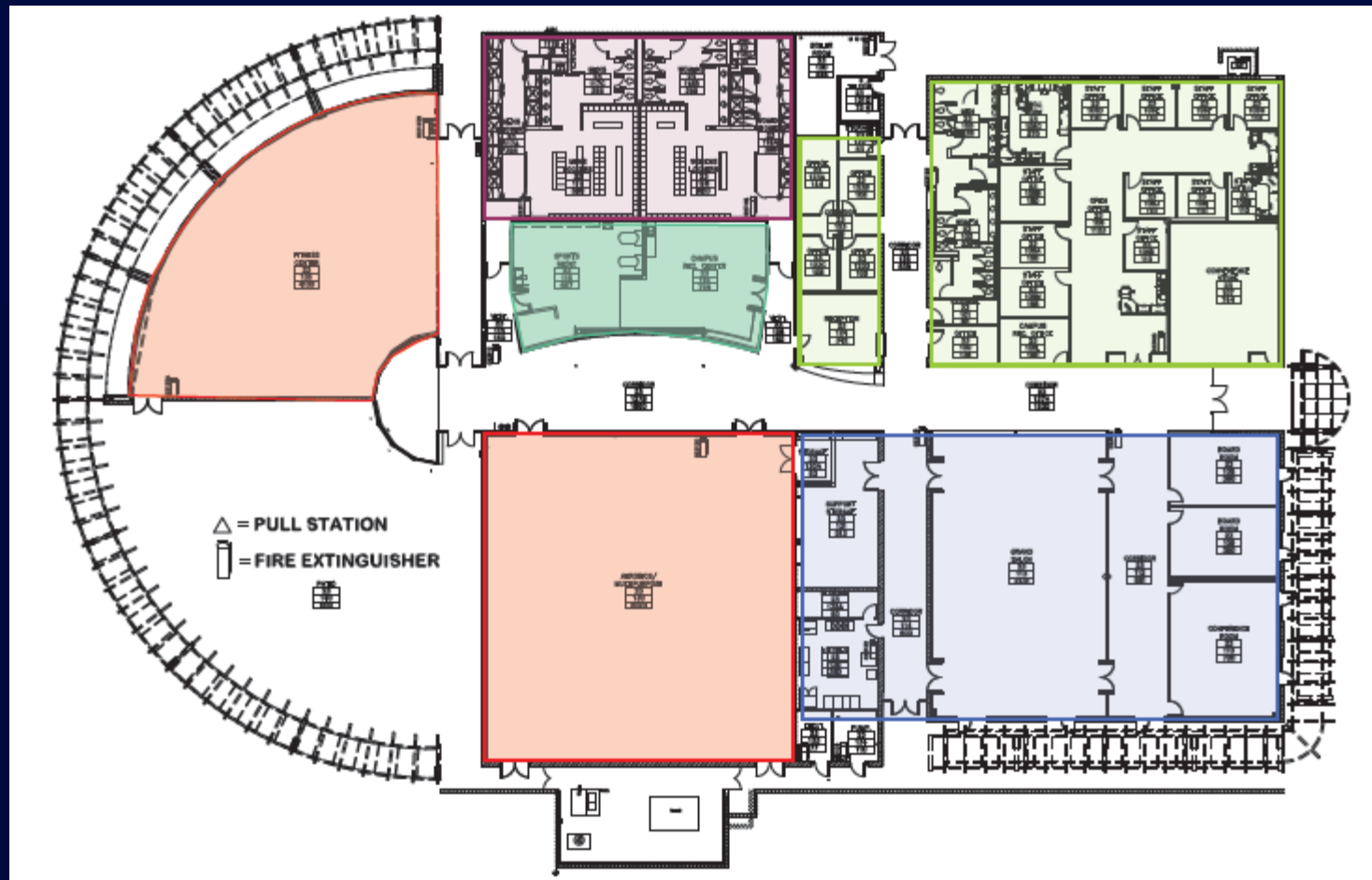
The Clarke Expansion

Facts of the M. Gordon Clarke Field House / University Student Union

- 32,000 approximate SF
- Completed 2003
- Architect – Robbins Jorgensen Christopher Architects
- Contractor – EDGE Development
- Program Spaces
 - Half court basketball court
 - Weight room
 - Locker rooms
 - Sports medicine
 - ASI Campus Recreation
 - Athletic and University Student Union offices
 - Conference rooms and prep kitchen



The Clarke Expansion





The Clarke Expansion

Athletics History – Jennifer Milo, Director of Athletics

- CSUSM Athletics Celebrating 15th Anniversary
- 1998-1999: Golf, Cross Country, Track and Field
- 2006-2007: Soccer, Baseball, Softball
- 2011-2012: Basketball, Volleyball
- 300+ CSUSM Student-Athletes
- Association: Currently NAIA, transitioning into the NCAA DII member
- Current Athletic Facilities: Clarke Field House (Offices), Mangrum Track and Soccer Field, Multi-Purpose Field, Baseball Field, Softball Field

The Clarke Expansion

RFP Information – Roberta Jorgensen, FAIA

- Design Criteria:
 - Design Narrative
 - Architectural Narrative
 - MEP / Structural Narrative
- Bonus Points
- Program Summary
- Room Data Sheets
- Building Technical Standards

The Clarke Expansion

RFP Information – Roberta Jorgensen, FAIA

- Reference Documents
 - Project Limit of Work Site Plan
 - Existing Site Topography and Utility Plan
 - Clarke field house Electronic Documents
 - Geotechnical Report
- Prevailing Wage
- Student Fee funded

The Clarke Expansion

Program Information – Roberta Jorgensen, FAIA

- Gym

- Basketball & Volleyball competition
- Retractable seating for 1200
- Equipment Storage
- Lobby and exterior pre-function area

- Team Locker Rooms

- Women's Basketball & Volleyball
- Men's Basketball
- General Athletics

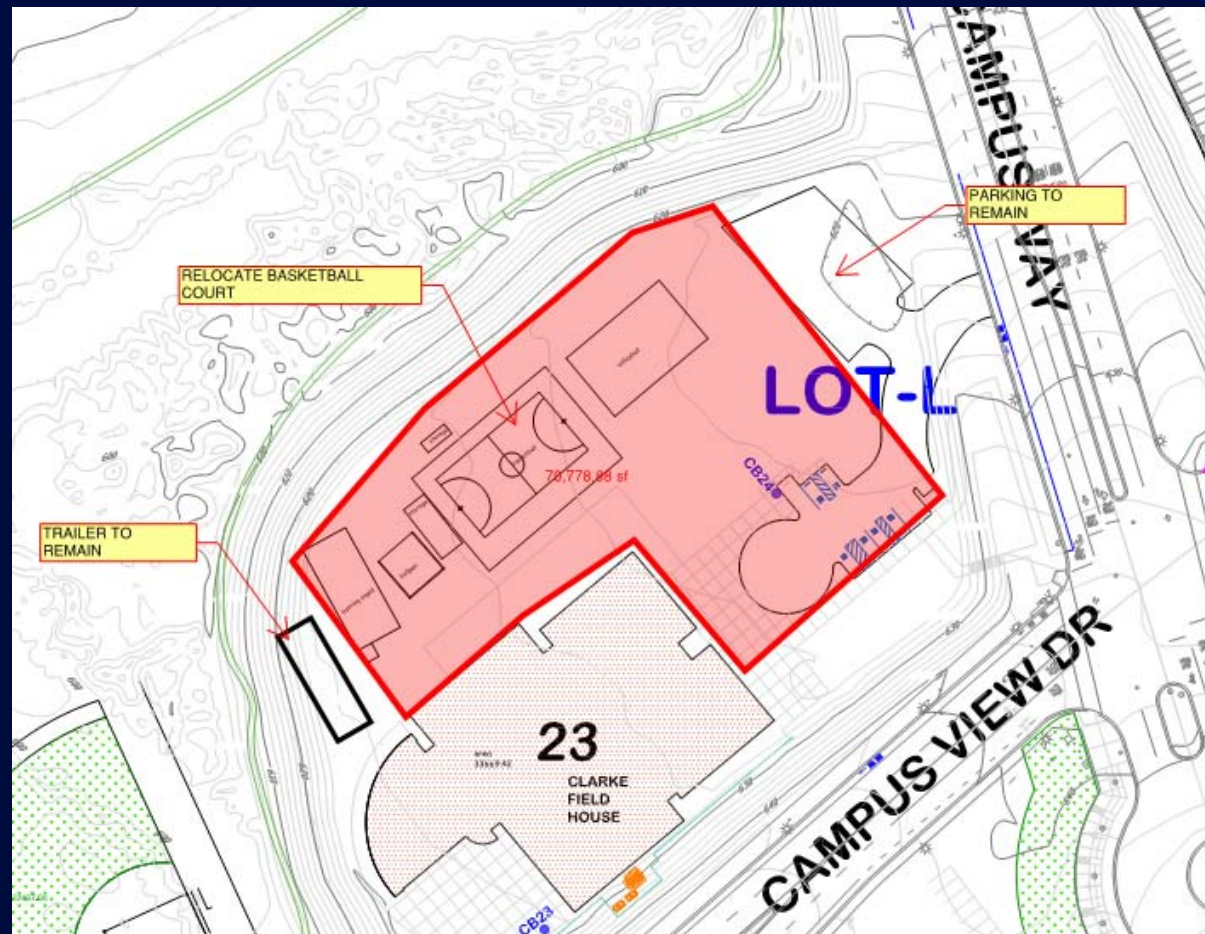


The Clarke Expansion

Program Information – Roberta Jorgensen, FAIA

- Visitor and Officials Locker Rooms
- Coaches Offices
- Reconfigure existing Sports Med/Equipment
- Connect to existing Clarke locker rooms
- Relocate outdoor basketball court
- Reconfigure traffic turn around

The Clarke Expansion



The Clarke Expansion

Project Schedule and Milestones

- RFQ release - October 1, 2013
 - PlanetBid required for document
 - CPDC Pre-qualification
 - Firm Experience and References
 - Proposed Personnel
 - Design Build Team Experience and History
 - Project Approach Narrative
 - Schedule
- RFQ Due - October 21, 2013

The Clarke Expansion

Project Schedule and Milestones

- Interviews - Week of October 28th
 - 6 teams
 - 45 minutes
 - No drawings or models
 - Short list to 3 teams
- RFP release – tentative - December 11, 2013
 - Pending CPDC approval
 - 6 week process – 2 design reviews
- BOT approval – CEQA January 29, 2014

The Clarke Expansion

Project Schedule and Milestones


- RFP Due – tentative - February 6, 2014
 - Technical evaluation – conceptual design
 - Cost proposal
 - Scoring system
 - Presentation – Q&A clarifications
- Schematic submittal - March 28, 2014
 - Service agreement to complete SD
- SD BOT Approval - May 21, 2014
 - Design Build GMP agreement
- Occupancy - September 2016




The Clarke Expansion




The Clarke Expansion



California State University
SAN MARCOS



[Current Students](#)
[Prospective Students](#)
[Parents & Families](#)
[Faculty & Staff](#)
[Alumni](#)
[Community](#)
[Donors & Friends](#)



THE CLARKE EXPANSION

- PDC Home
- Planning & Design**
- ▶ The Clarke Expansion
- Construction
- Completed
- Start a Project
- Standards & Regulations
- Consultants & Contractors
- Sustainable Design
- Master Plan
- Campus Moves
- Campus Signage
- Plan Room
- About PDC
- FAS Division

The Clarke Expansion will be a 23,000 GSF addition to the existing M. Gordon Clarke Field House / University Student Union building. It will house a 1,200 seat basketball facility and recreational gymnasium. Included will be support spaces and locker rooms.

The project delivery method will be Design Build. The project budget is \$10,000,000. The Request for Qualifications will be available October 1, 2013 and selection of three teams to receive the Request for Proposal will be by the end of November 2013. The Request for Proposal will be available mid-January 2014 after approval of the project by the Board of Trustees.

CLARKE EXPANSION OPEN HOUSE

Project Manager:
Bradly Fenton

Funding:
TBD

Total Project Cost:
\$10,000,000

Current Status:
Planning

Schedule:
TBD

Architect:
TBD

Contractor:
TBD



The Clarke Expansion

Project Contacts

- Project Manager
• RFI questions
• Site access
• Delivery of RFQ
Brad Fenton
bfenton@csusm.edu
- Procurement
• PlanetBid
• Pre-qualifications
• Delivery of RFP
• <http://www.planetbids.com/portal/portal.cfm?CompanyID=16128#>
Kerry Stein
kstein@csusm.edu

Questions and Answers