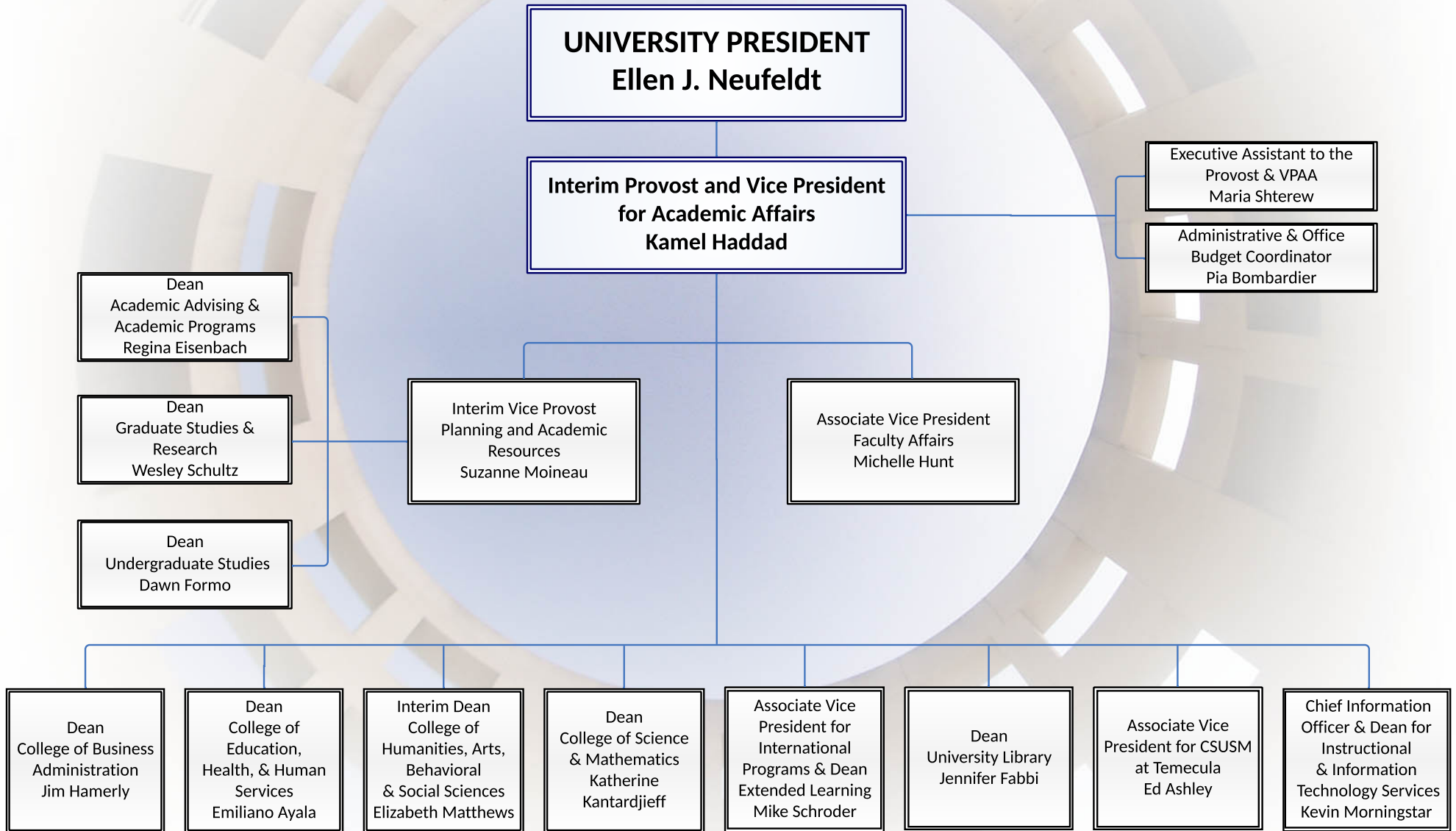
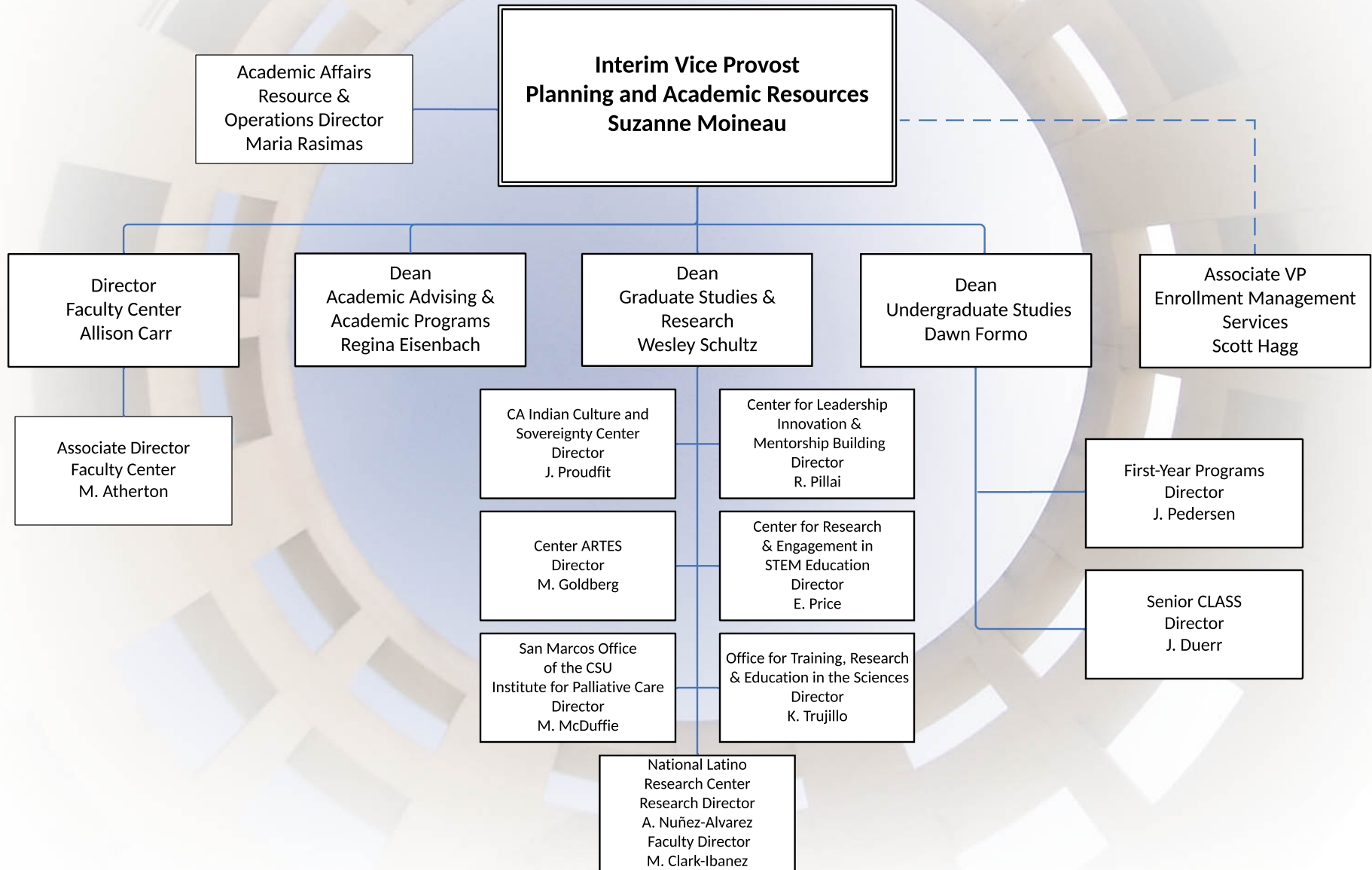


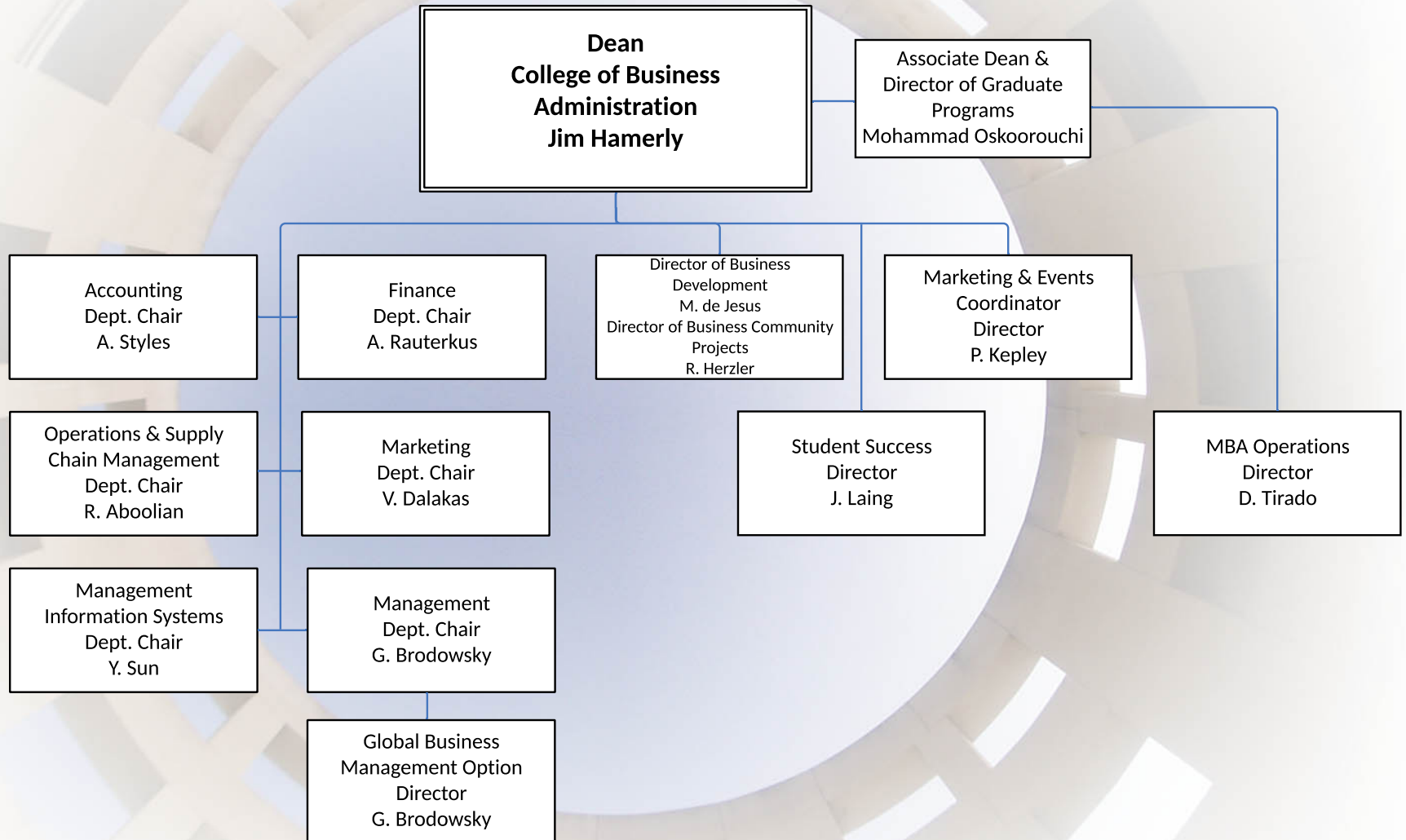
California State University San Marcos Division of Academic Affairs AY 2019 / 2020



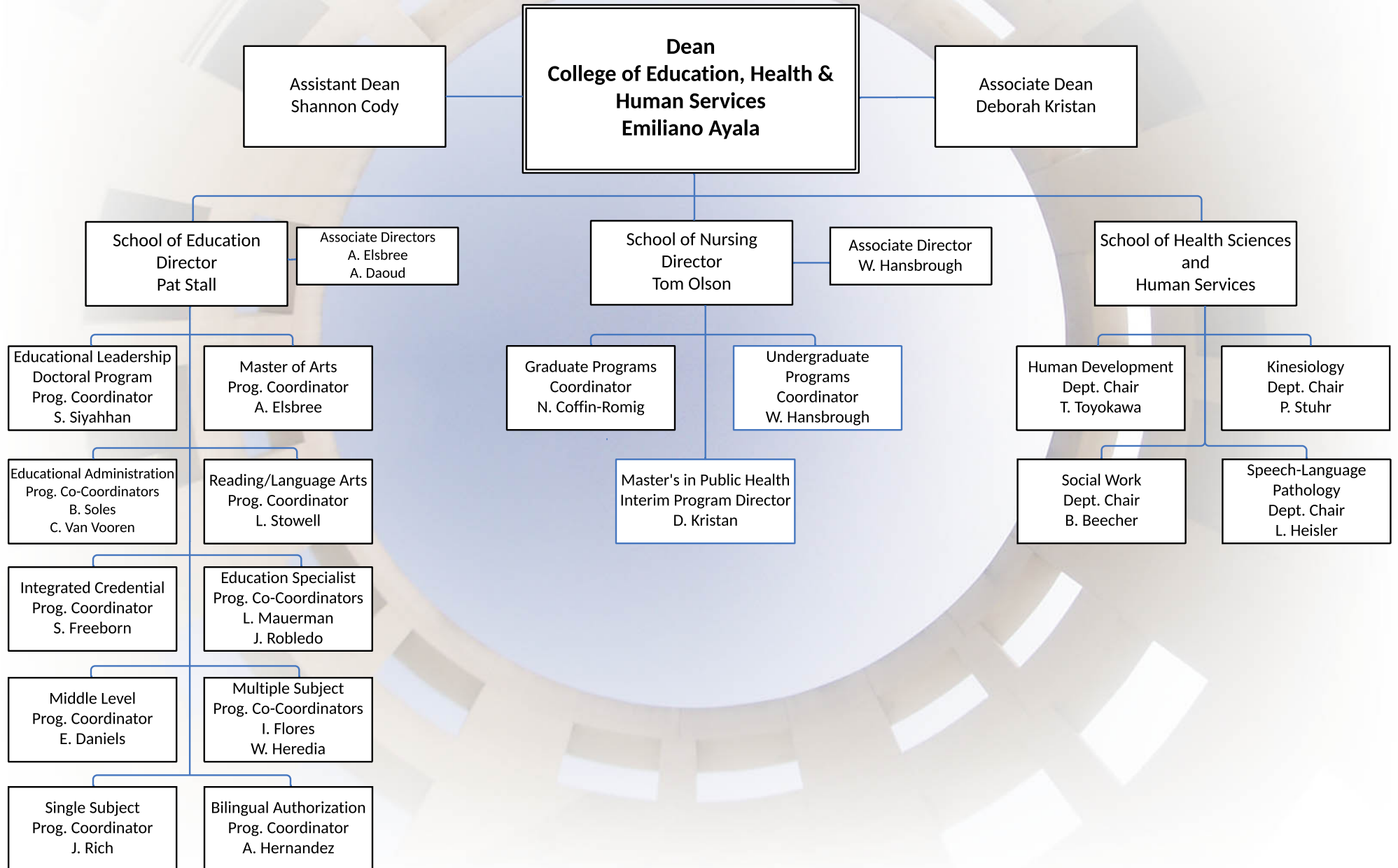
California State University San Marcos Division of Academic Affairs AY 2019 / 2020



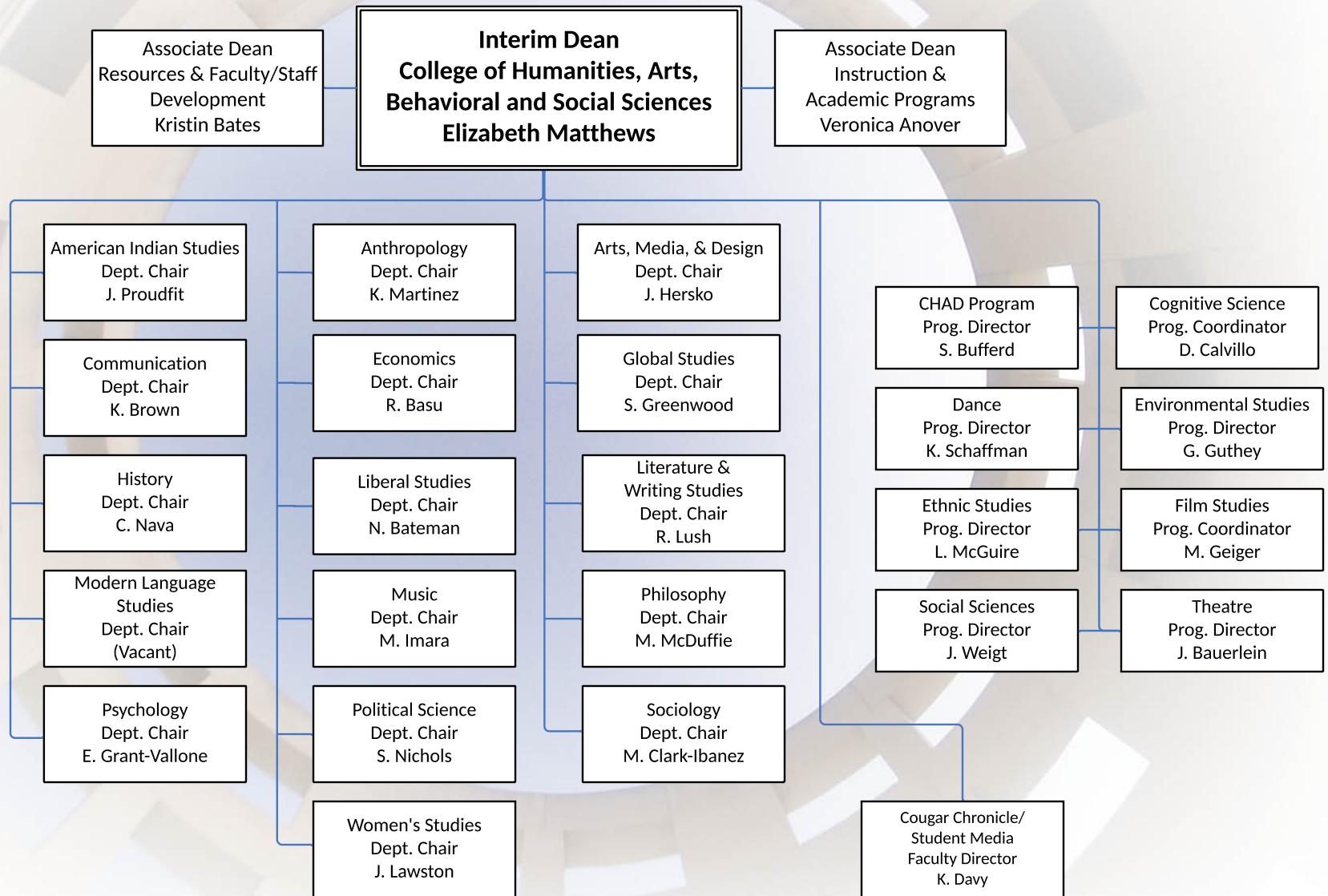
California State University San Marcos Division of Academic Affairs AY 2019 / 2020



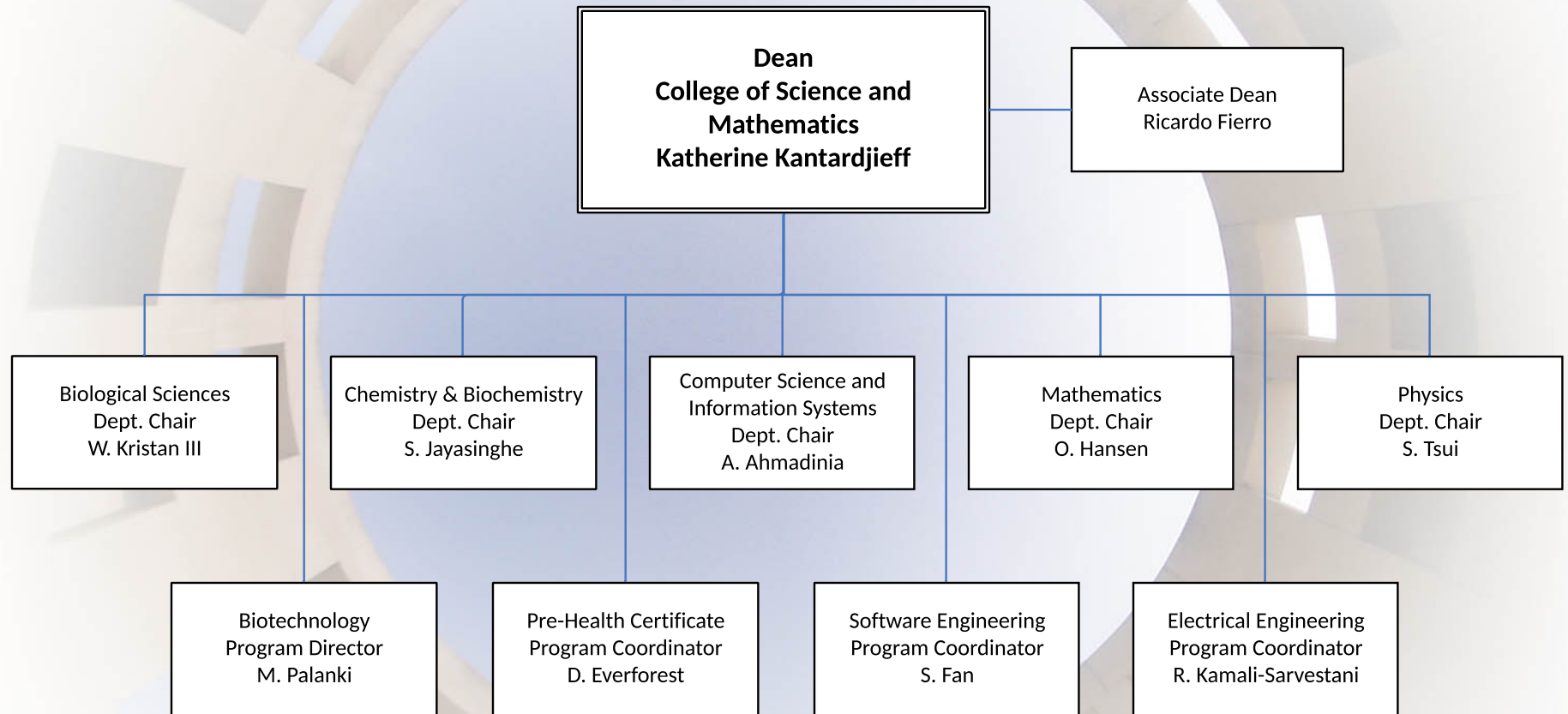
California State University San Marcos Division of Academic Affairs AY 2019 / 2020



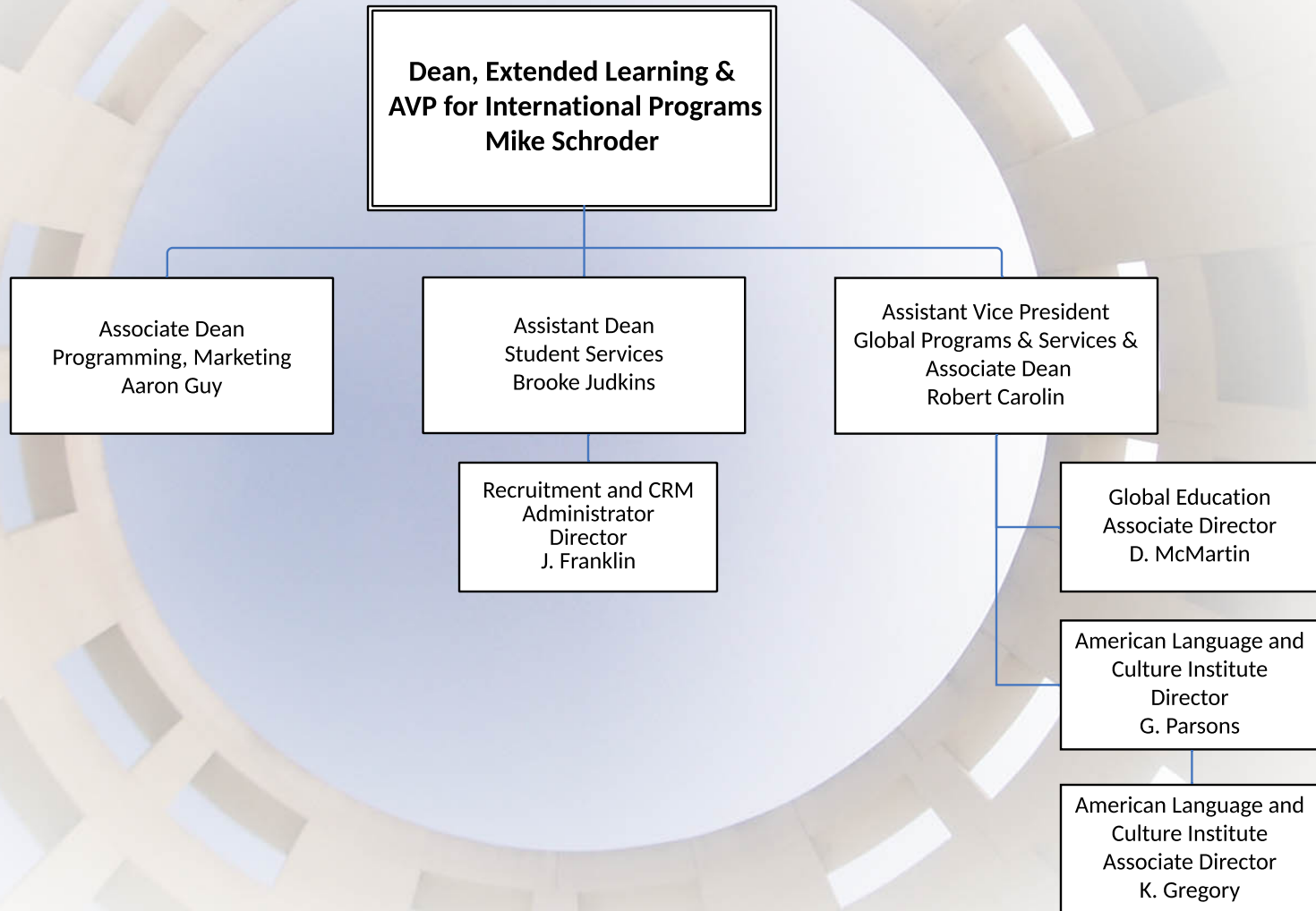
California State University San Marcos Division of Academic Affairs AY 2019 / 2020



**California State University San Marcos
Division of Academic Affairs
AY 2019 / 2020**



**California State University San Marcos
Division of Academic Affairs
AY 2019 / 2020**

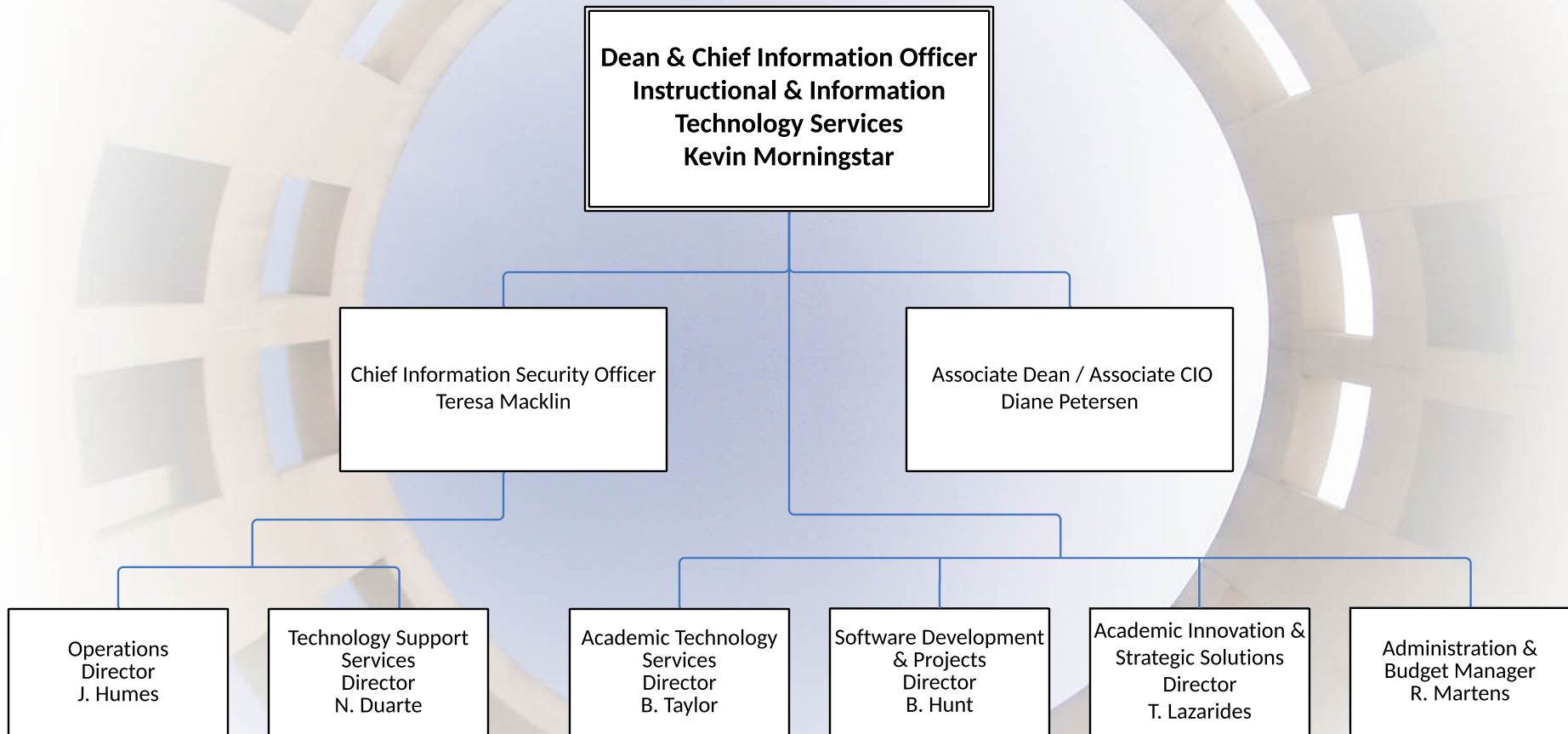


**California State University San Marcos
Division of Academic Affairs
AY 2019 / 2020**

**Associate Vice President for
CSUSM at Temecula
Ed Ashley**

Associate Dean
Donna San Miguel

**California State University San Marcos
Division of Academic Affairs
AY 2019 / 2020**



**California State University San Marcos
Division of Academic Affairs
AY 2019 / 2020**

