

Pick up FREE Antigen Tests on campus:

Students

Pick up from Student Health
Counseling Services (SHCS)

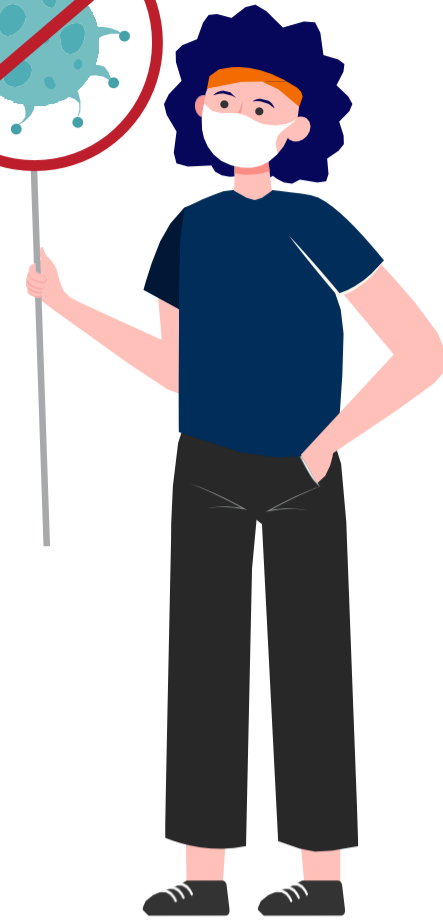
Students Experiencing Cold-Like
and or COVID-19 Symptoms

Do Not Come to Campus

Keep your faculty informed of your status.

Monitor your symptoms.

If symptoms continue, consider COVID
testing and/or seek medical care from SHCS
or your Primary Care Physician.



Positive COVID-19 Case

Email the COVID Case Management Team at
covidcasereporting@csusm.edu

Isolate for a minimum of 5 days as directed
by COVID Case Management Team

To end isolation; if on day 5 your symptoms
have improved and no fever for at least 24
hours, you are cleared on day 6.

Should wear a mask for 10 days indoors
around others following symptom onset or
positive test if no symptoms (Day 0)

Close Contact Exposure Without Symptoms

Fully-vaccinated* or
Not fully-vaccinated

Should wear a well-fitted mask indoors around others for 10 days from the last day of being exposed and monitor for symptoms

If symptoms start, consider to test

If positive notify the COVID Case Management Team at covidcasereporting@csusm.edu

No symptoms, recommended to test 3-5 days after exposure

Negative

Return to normal activities while wearing a well-fitted mask indoors around others for 10 days from the last day of being exposed

Positive

Contact the COVID Case Management Team at covidcasereporting@csusm.edu

Isolate for a minimum of 5 days as directed by the COVID Case Management Team

To end isolation; if on day 5 your symptoms have improved and no fever for at least 24 hours, you are cleared on day 6.

Should wear a mask indoors around others for 10 days following symptom onset or positive test if no symptoms (Day 0).

Pick up FREE Antigen Tests on campus:

Students

Pick up from Student Health Counseling Services (SHCS)

Note: Keep faculty informed of your status.



* Fully vaccinated is defined as 2 weeks after the final dose of a CDC-approved vaccine and, if eligible, having received a booster shot.