

Creating Intentional
**Community
Building &
Programming**

Alycia McGeever
Women & Gender Equity
Center Assistant Director





Meet Your Presenter



Currently serve as the Women & Gender Equity Center's Assistant Director! Have been working on campus since Fall of 2019!

Served in a variety of undergraduate leadership roles - varying from student organizations to campus departments!

Passionate about community building and intentional programming to make an impact on our communities.



Learning Outcomes

By the end of this presentation, participants will:

PLO #1



Understand the importance of intentional community building and its impact on member engagement.

PLO #2

Gain practical strategies for creating and sustaining an inclusive community within their student organizations.

PLO #3

Identify actionable steps to implement these strategies within their student organizations.

Common Ground

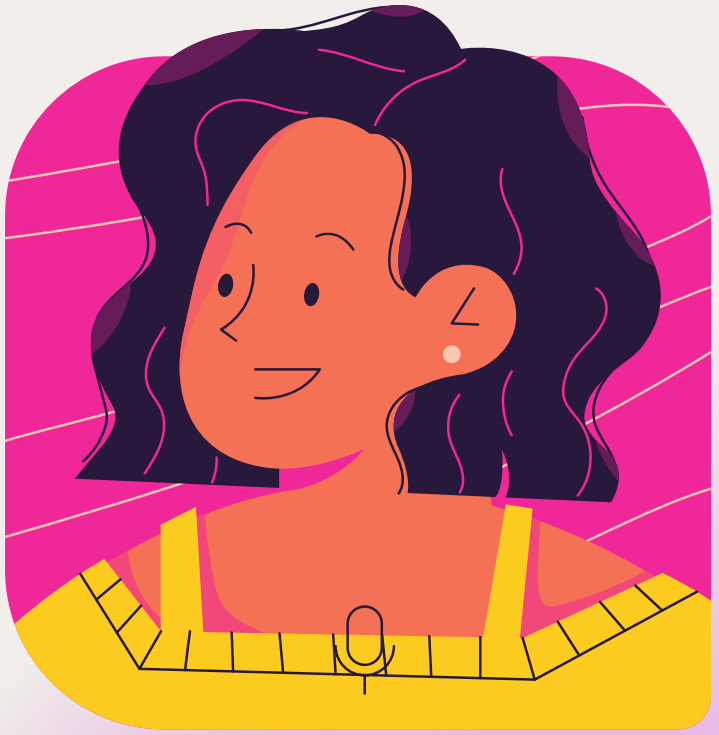
Creating Connections!

- Stand up and find someone near you that you don't know well.
- You'll have a few minutes to discover 3 things they have in common (e.g., same major, favorite hobby, hometown).
- After discussing, a few pairs can share one of their commonalities with the group.



What Does Community Mean to You?

Type in your question after you've
scanned the QR code!



Building Strong Foundation



1) Shared Values & Vision

Establish a common set of values and a vision that aligns with your organization's mission.

- What is your organization & its leaders - WHY?
- Continuously reevaluate if your programs are serving CURRENT students needs!

2) Inclusive Programming

Design programs and events that are accessible and engaging for ALL members.

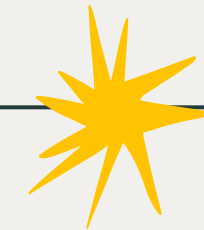
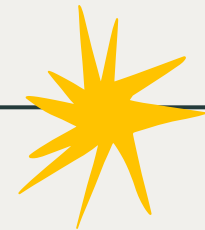
- Who is being included and who might be left out?
- How can we create spaces where everyone feels safe and valued?

3) Facilitating Open Dialogue

Train leaders in creating spaces where members feel comfortable sharing their thoughts, concerns, and experiences.

- What are the ongoing needs of our members, and how can we best support them?

**Think about a time when you
felt included in your
organization and what made
that experience positive.**



Share with a partner how you can
create that positive experience
for new members.



Building Blocks **for an Inclusive** **Community.**

Write one value you think is essential for your student group's success (e.g., respect, collaboration, integrity) on a sticky note.

The results will demonstrate how diverse values contribute to a strong foundation.

Engaging Members Through Active Participation



What You're Doing Now

In pairs, discuss a role they hold in their organization and how it makes them feel connected.

Ways to Advance

Think about roles they could create or enhance in their own organizations to increase engagement.

Sustaining Community Engagement

Ongoing Member Engagement:

Explore ways to keep members engaged and committed to the community beyond the initial excitement.

Celebrating Success and Growth:

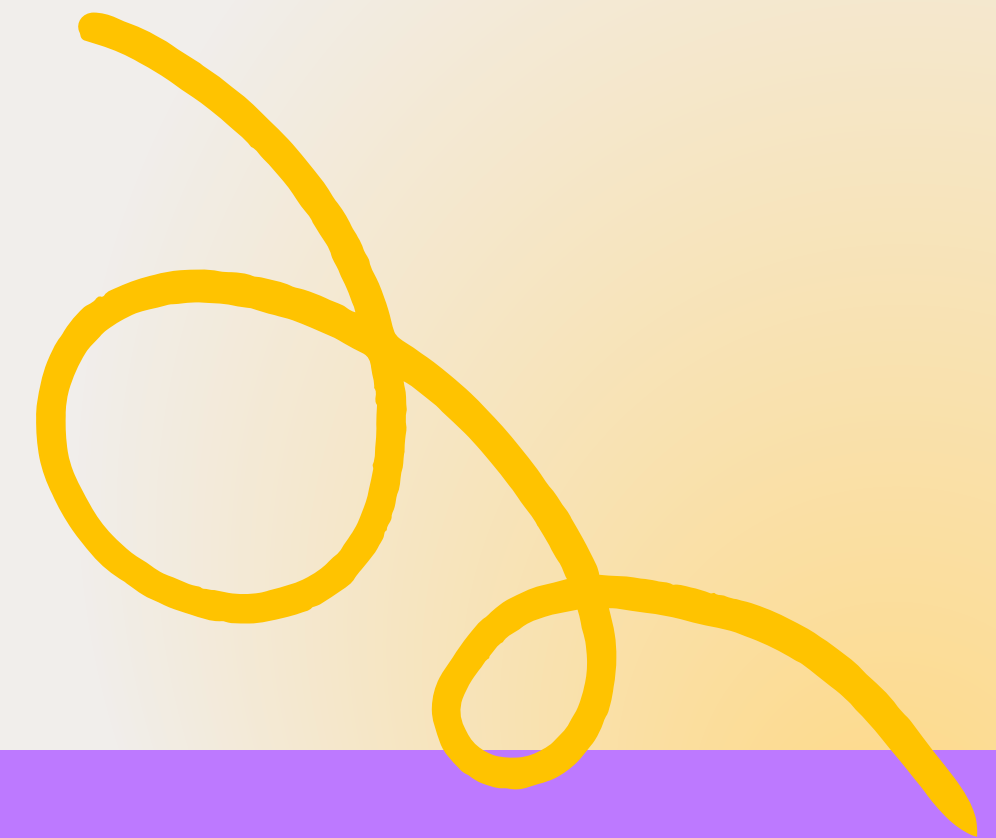
Encourage recognition of both individual and group achievements to foster a sense of belonging and pride.

Mentorship and Support Networks

Explore the role of mentorship in sustaining the community and supporting new leaders.

Adapting to Change:

It's important to be flexible and adapting programming to meet the evolving needs of the group.





Ask questions

to continue conversations

Example

To create a stunning presentation, it's best to simplify your thoughts. Start with an outline of topics and identify highlights, which can be applied to whatever subject you plan on discussing.

Example

To create a stunning presentation, it's best to simplify your thoughts. Start with an outline of topics and identify highlights, which can be applied to whatever subject you plan on discussing.

Example

To create a stunning presentation, it's best to simplify your thoughts. Start with an outline of topics and identify highlights, which can be applied to whatever subject you plan on discussing.



IMPLEMENT!

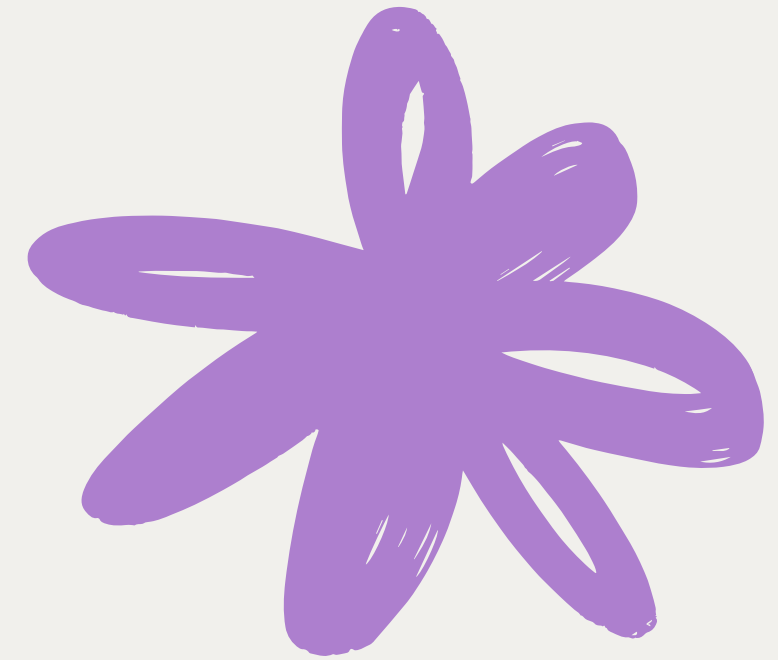
Think about how you can implement one of the strategies discussed today in your organization.

COLLABORATE!

Continue the conversation with your peers and within their organizations!



Let's Stay Connected!



**Alycia McGeever, WGEC
Assistant Director**

Location:
USU 3200

Email:
amcgeeve@csusm.edu